

## Investing in Puget Sound's health and the Region's future

August 2020

### Project Background

Seattle Public Utilities and King County Wastewater Treatment Division are building an underground storage tunnel to significantly reduce the amount of polluted stormwater and sewage that flows into the Lake Washington Ship Canal, Salmon Bay and Lake Union from our sewer system during storms.

The tunnel is 2.7-miles long, running from Ballard to Wallingford, and approximately 18-ft, 10-in wide. It will temporarily hold more than 29 million gallons of sewage and stormwater during heavy rain. When the storm passes, the stored sewage and stormwater will be sent to King County's West Point Wastewater Treatment Plant.

### Queen Anne Site Elements

Starting as early as July 2020, Seattle Public Utilities and King County will begin work near West Ewing Mini Park for the Ship Canal Water Quality Project.

Work will include:

- Building a new 8-ft diameter tunnel under the Ship Canal to convey polluted stormwater and sewage to the new storage tunnel
- Building a drop shaft to direct flows into the new 8-ft diameter tunnel
- Installing new pipes to convey polluted stormwater and sewage to the drop shaft
- Providing odor control to minimize odor



### What to expect during construction

- Increased noise, dust, vibrations and construction vehicles
- Parking restrictions and roadway detours
- Vehicle, pedestrian and bicycle wayfinding and detour signage
- Ship Canal Trail detour from August 2020 through summer 2022
- Protection or removal of some trees
- Closure of West Ewing Mini Park and adjacent parking lot through mid-2023
- Increased truck traffic along W Nickerson St and 3rd Ave W

### Contact

For questions or comments about this project:

**Email:** [SPU\\_ShipCanalProject@seattle.gov](mailto:SPU_ShipCanalProject@seattle.gov)

**Call:** 206-701-0233

**Website:** [spushipcanal.participate.online](http://spushipcanal.participate.online)

For interpretation services please call **206-386-9778**

如需要口譯服務 請撥電話號碼 **206-386-9778**

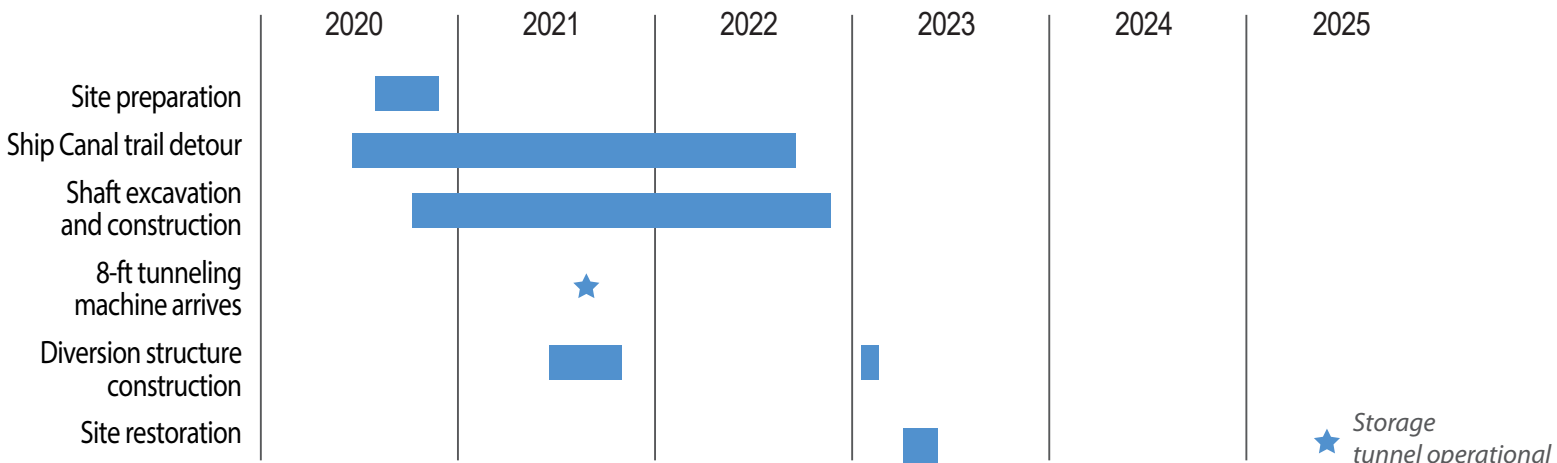
통역 서비스를 원하시면 **206-386-9778** 으로

Wixii turjubaan afka ah ku saabsan ,fadlan la soo xariir taleefoonka **206-386-9778**

Para servicios de interpretación por favor llame al **206-386-9778**

Para sa serbisyo ng tagapagpaliwanag tumawag sa **206-386-9778**

## Queen Anne Schedule



■ Construction

Schedule is subject to change

The following photos are examples from other construction sites



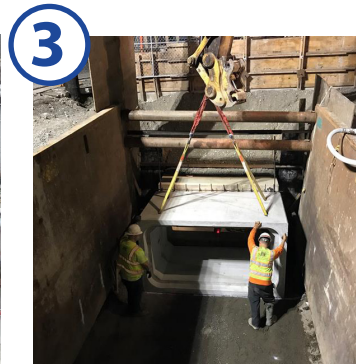
### 1 Site Preparation

Starting as early as July 2020, crews will mobilize to the work area and put fences up for the safety of crews and people nearby.



### 2 Excavation & Construction

Crews will dig beneath the surface to prepare and build underground structures that will be used to access the storage tunnel for operations and maintenance.



### 3 Diversion Structure Construction

Crews will excavate and build an underground diversion structure which will divert untreated sewage and stormwater to the storage tunnel during heavy rains.



### 4 Site Restoration

Once construction is complete all impacted areas will be restored to previous conditions. This will include the replanting of trees and repaving streets.