

Investing in Puget Sound's health and the Region's future

July 2020

Project Background

Seattle Public Utilities and King County Wastewater Treatment Division are building an underground storage tunnel to significantly reduce the amount of polluted stormwater and sewage that flows into the Lake Washington Ship Canal, Salmon Bay and Lake Union from our sewer system during storms.

The tunnel is 2.7-miles long, running from Ballard to Wallingford, and approximately 18-ft, 10-in wide. It will temporarily hold more than 29 million gallons of sewage and stormwater during heavy rains. When the storm passes, the stored sewage and stormwater will be sent to King County's West Point Wastewater Treatment Plant.

Fremont Site Elements

In spring 2020, Seattle Public Utilities and King County will begin work in Fremont for the Ship Canal Water Quality Project. Work will include:

- Soil Stabilization
- Building the new storage tunnel
- A new 85-ft deep, 32-ft diameter vertical shaft to carry sewage and stormwater into the new storage tunnel
- New pipe installation to connect the new shaft to the existing combined sewer system overflow pipe
- A new 8-ft diameter tunnel under the Ship Canal to carry flows from Queen Anne to the storage tunnel
- New underground structures to house mechanical and electrical equipment and odor control
- Utility relocations



What to expect during construction

- Construction-related noise, traffic, dust and vibrations
- Full closure of NW 36th St between Leary Way NW and 3rd Ave NW
- Closure of 2nd Ave NW between Leary Way NW and Canal St
- Temporary roadway detours on streets adjacent to the project area. Leary Way NW will remain open to traffic, but several lanes will be temporarily closed for construction
- Pedestrian sidewalk detour on north side of Leary Way NW
- Increased truck traffic
- Parking restrictions near work zone
- Removal of some trees in the project area
- Burke-Gilman Trail to remain open except temporary impact during conduit installation (likely one week)

Contact

For questions or comments about this project:

Email: SPU_ShipCanalProject@seattle.gov

Call: 206-701-0233

Website: spushipcanal.participate.online

For interpretation services please call **206-386-9778**

如需要口譯服務 請撥電話號碼 **206-386-9778**

통역 서비스를 원하시면 **206-386-9778** 으로

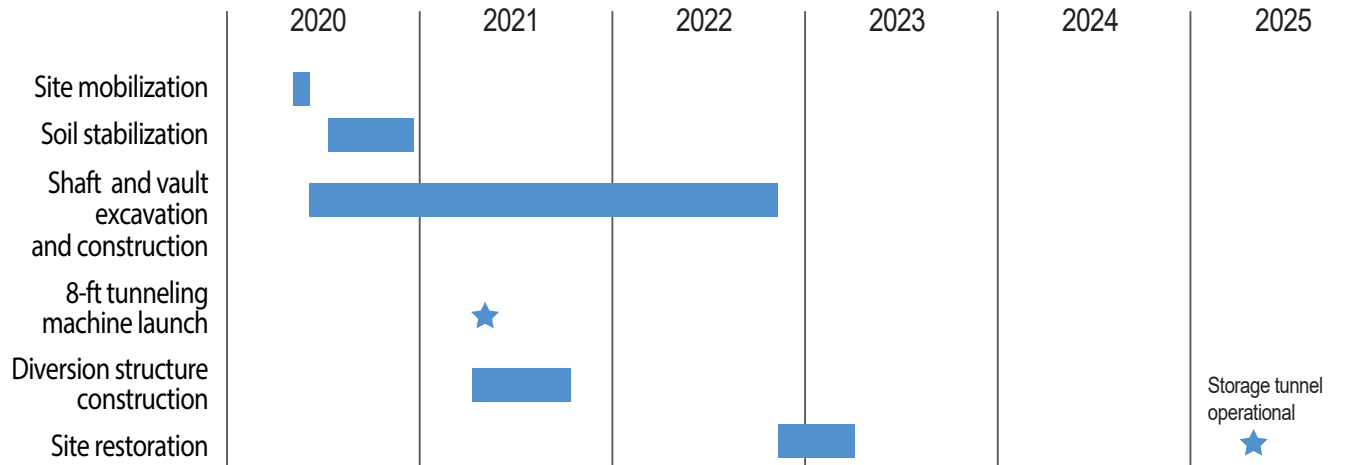
Wixii turjubaan afka ah ku saabsan ,fadlan la soo xariir taleefoonka **206-386-9778**

Para servicios de interpretación por favor llame al **206-386-9778**

Para sa serbisyo ng tagapagpaliwanag tumawag sa **206-386-9778**

Fremont Schedule

Schedule is subject to change



■ Construction

The following photos are examples from other construction sites

1



Site Mobilization

In spring 2020, crews will mobilize to the work area and set up fences for the safety of crews and people nearby.

2



Soil Stabilization

After the site is set up, we will begin preparing the soil for underground construction using stabilization techniques (jet grouting, ground freezing, etc.).

3



Excavation & Construction

Crews will dig beneath the surface to prepare and build underground structures that will be used to access the storage tunnel for operations and maintenance.

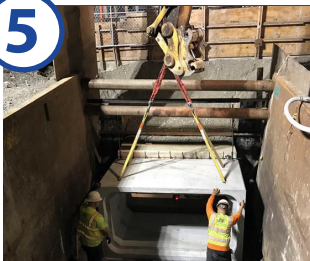
4



8-ft Tunneling Machine Launch

An 8-ft tunnel will bring flows from Queen Anne to the storage tunnel via Fremont. To build this tunnel, a tunnel boring machine will be launched under the Ship Canal starting in Fremont.

5



Diversion Structure Construction

Crews will excavate and build an underground diversion structure which will send untreated sewage and stormwater to the storage tunnel during heavy rains.

6



Site Restoration

Once construction is complete, all impacted areas will be restored to previous conditions. This will include the replanting of trees, repaving streets and sidewalks.