

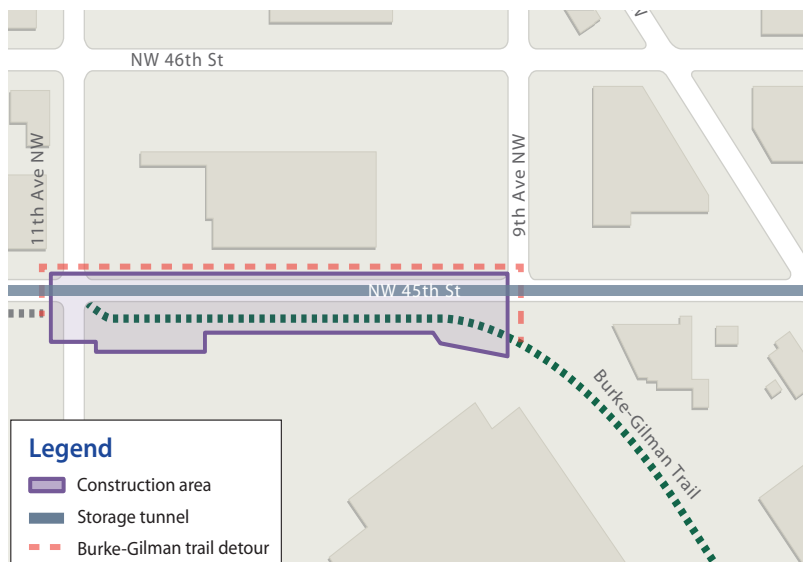
## Reducing Seattle's sewer overflows by 2025

March 2020

### Project Background

Seattle Public Utilities and King County Wastewater Treatment Division are building an underground storage tunnel to significantly reduce the amount of polluted stormwater and sewage that flows into the Lake Washington Ship Canal, Salmon Bay and Lake Union from our sewer system during storms.

The tunnel is 2.7 miles long, running from Ballard to Wallingford, and approximately 18'10 ft wide. It will temporarily hold more than 29 million gallons of sewage and stormwater during heavy rain. When the storm passes, the stored sewage and stormwater will be sent to King County's West Point Wastewater Treatment Plant.



### East Ballard Site Elements

In spring 2020, Seattle Public Utilities and King County will begin work in East Ballard for the Ship Canal Water Quality Project. Work will include:

- Soil stabilization
- Building the new storage tunnel
- Building a drop shaft to collect flows entering the tunnel near the intersection of 11th Avenue NW and NW 45th Street
- Installing new pipes to convey polluted stormwater and sewage to the tunnel
- New underground structures to house mechanical and electrical equipment, and odor control

### What to expect during construction

- Construction-related noise, traffic, dust and vibrations
- One lane closure on 11th Ave NW between Fred Meyer entrance on 11th Ave NW and NW 45th St for approximately three to six months
- Full closure of NW 45th St between 9th and 11th Ave NW for a period of 15 months. This will include detours for vehicular traffic, pedestrians, and the Burke-Gilman Trail to the north side of NW 45th St in 2021
- Removal of some trees in the project area
- Possible nighttime work
- Increased truck traffic
- Parking restrictions

### Contact

For questions or comments about this project:

**Email:** [SPU\\_ShipCanalProject@seattle.gov](mailto:SPU_ShipCanalProject@seattle.gov)

**Call:** 206-701-0233

**Website:** [spushipcanal.participate.online](http://spushipcanal.participate.online)

For interpretation services please call **206-386-9778**

如需要口譯服務 請撥電話號碼 **206-386-9778**

통역 서비스를 원하시면 **206-386-9778** 으로

Wixii turjubaan afka ah ku saabsan ,fadlan la soo xariir taleefoonka **206-386-9778**

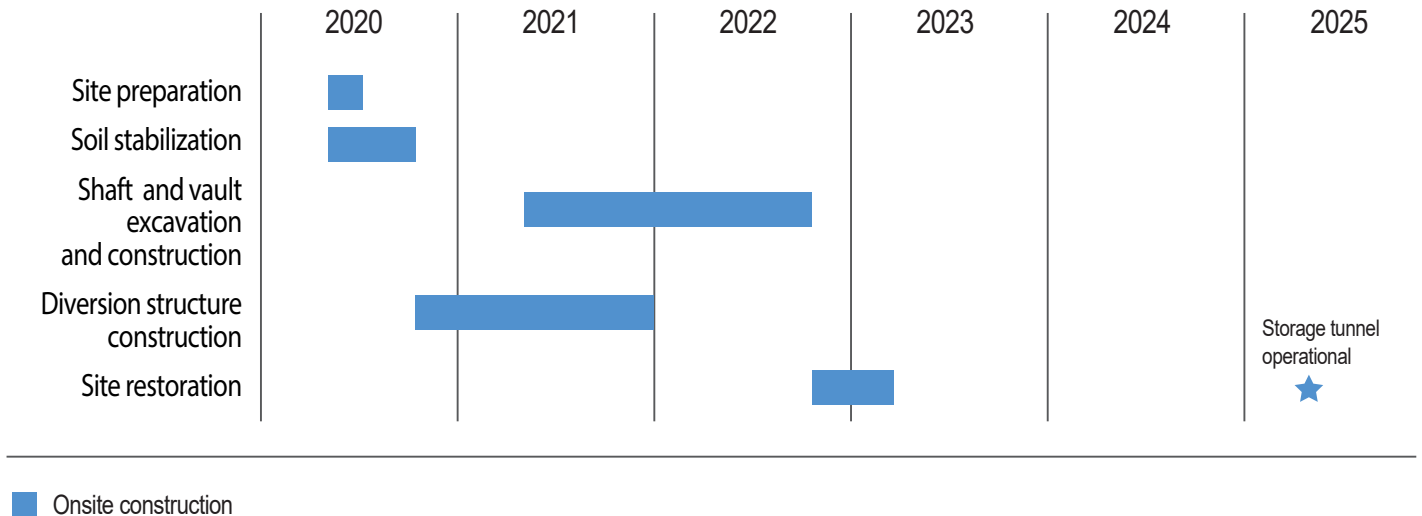
Para servicios de interpretación por favor llame al **206-386-9778**

Para sa serbisyo ng tagapagpaliwanag tumawag sa **206-386-9778**

## East Ballard Schedule

March 2020

Schedule is subject to change



The following photos are examples from other construction sites



### Site Preparation

In spring 2020, crews will mobilize to the work area and set up fences for the safety of crews and people nearby.



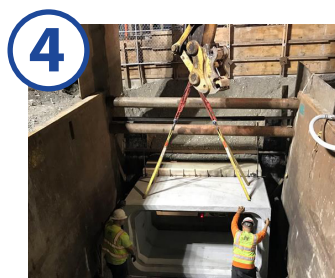
### Soil Stabilization

After the site is set up, we will begin preparing the soil for underground construction using stabilization techniques (jet grouting, ground freezing, etc.).



### Excavation & Construction

Crews will dig beneath the surface to prepare and build underground structures that will be used to access the storage tunnel for operations and maintenance.



### Diversion Structure Construction

Crews will excavate and build an underground diversion structure which will send untreated sewage and stormwater to the storage tunnel during heavy rains.



### Site Restoration

Once construction is complete, all impacted areas will be restored to previous conditions. This will include the landscape restoration, repaving streets and sidewalks.