

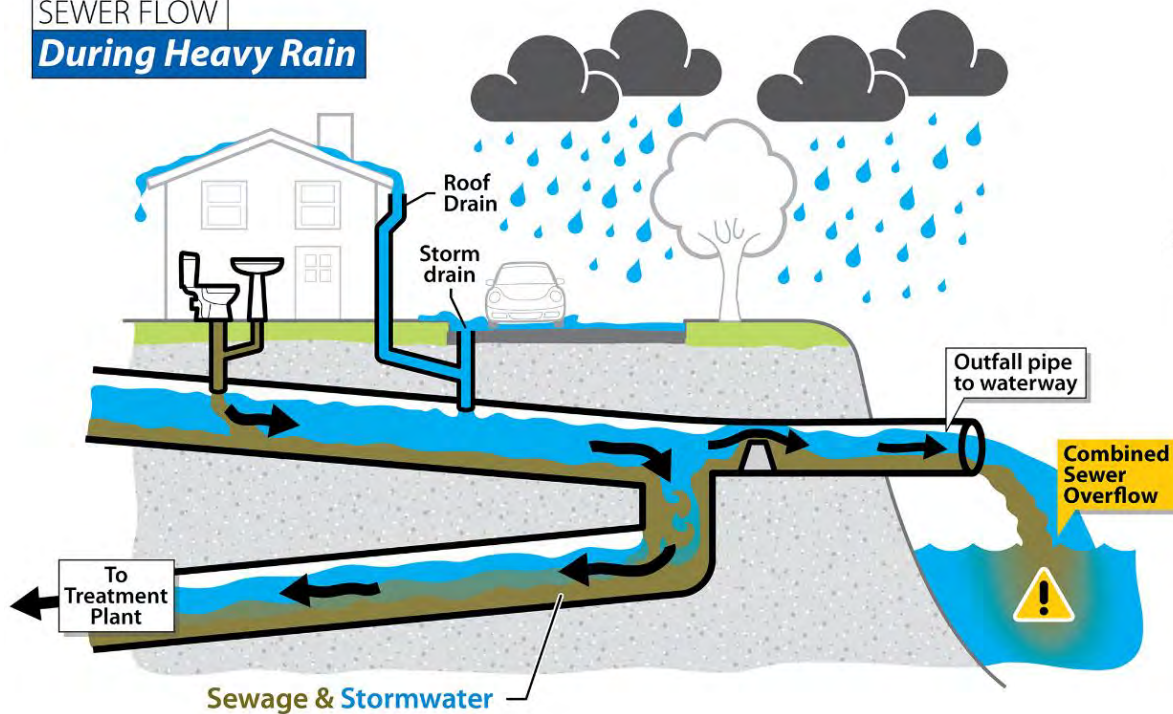
# Agenda

- Program overview
- Storage Tunnel construction update
- Pump station design
- Art on the Ship Canal Water Quality Project

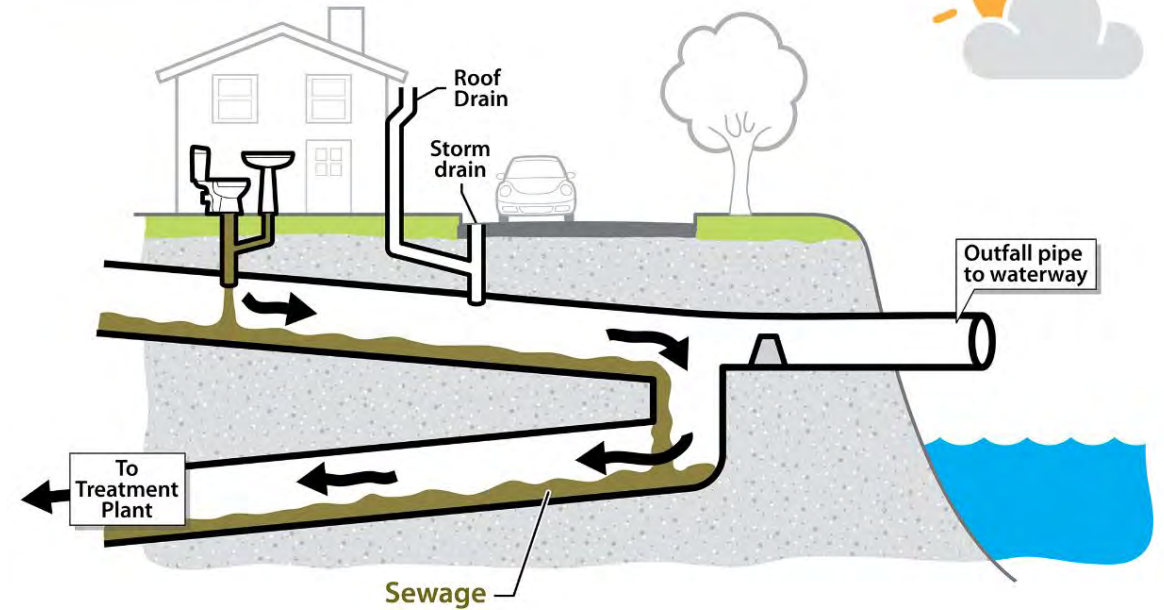


# Combined Sewer Overflows

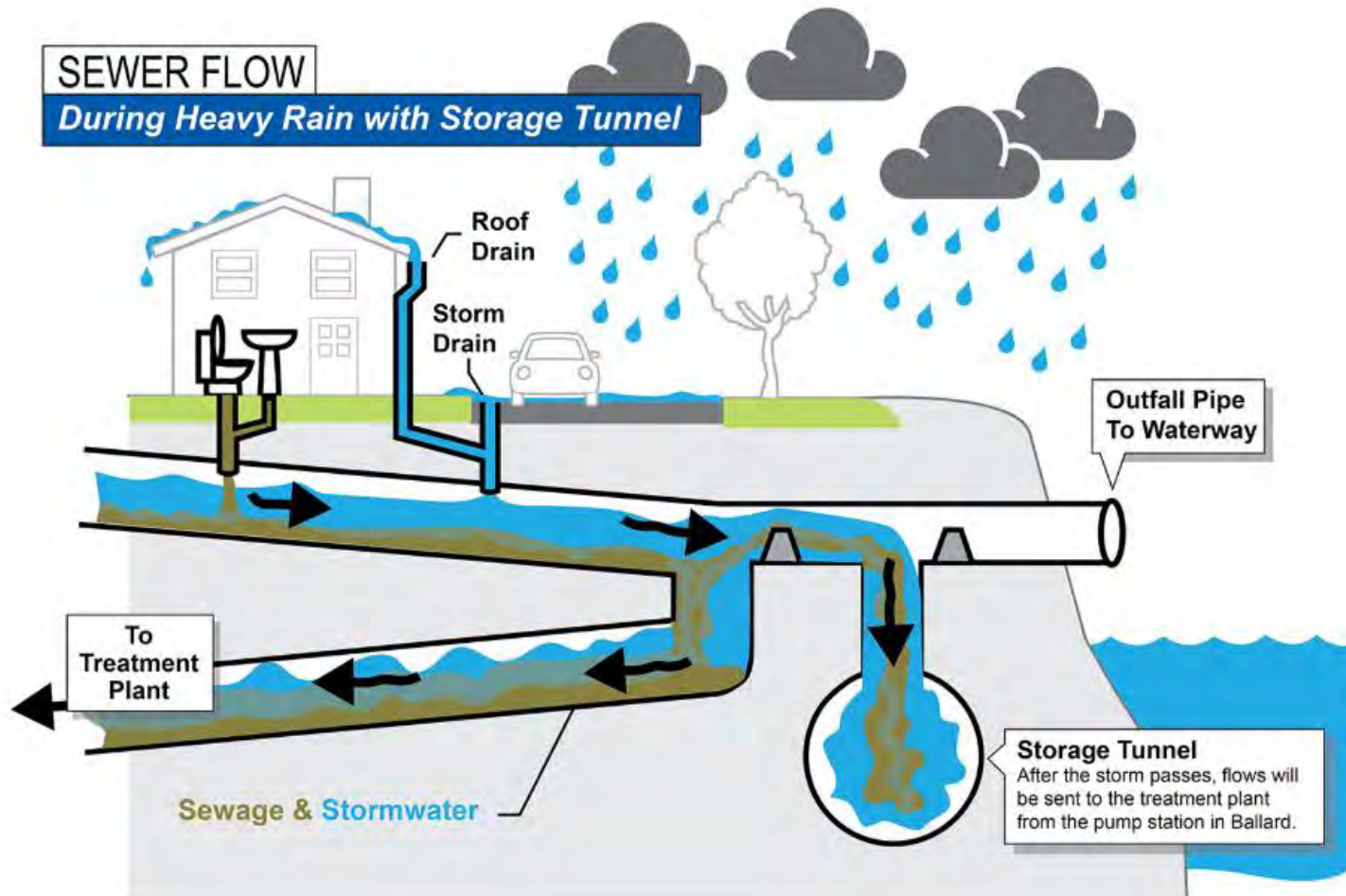
SEWER FLOW  
**During Heavy Rain**



SEWER FLOW  
**During Dry Weather**



# How a tunnel helps



# Ship Canal Water Quality Project

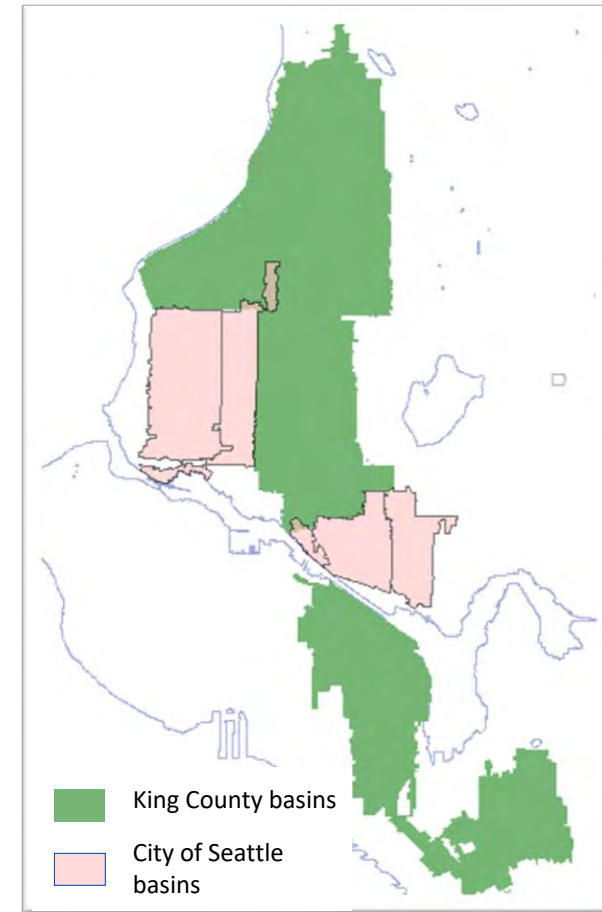
The tunnel will improve water quality regionally by keeping more than 75 million gallons of polluted stormwater (from rain) and sewage on average each year from flowing into the Lake Washington Ship Canal, Salmon Bay, and Lake Union.

## Consent decree

- With US Department of Justice, US Environmental Protection Agency, and WA Department of Ecology
- Less than 1 combined sewer overflow per outfall per year on a 20-year moving average

## Joint Project: King County & City of Seattle

- 7 Outfalls: 2 KC, 5 Seattle
- Joint Project Agreement: City of Seattle (65%), King County (35%)





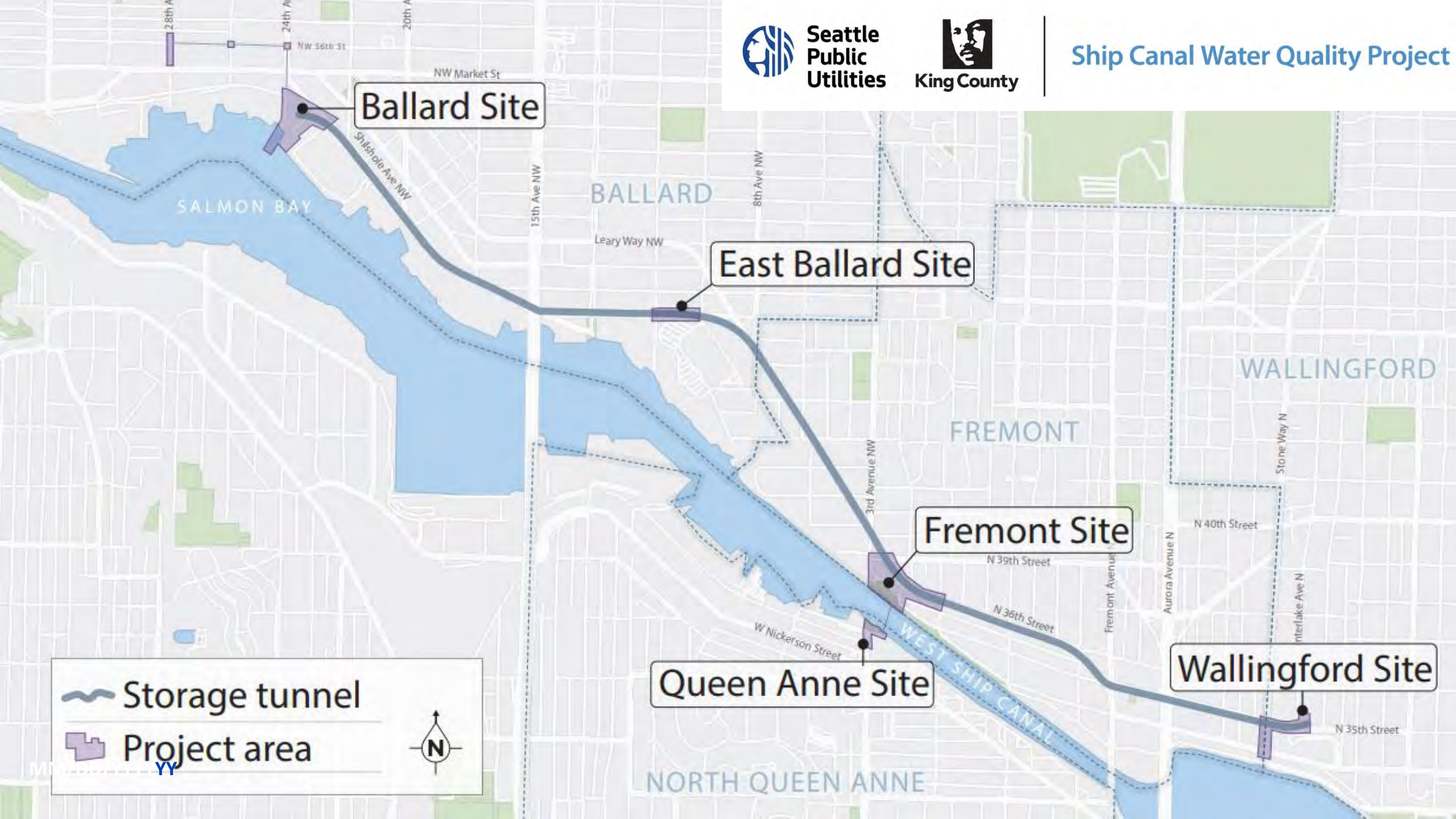


Seattle  
Public  
Utilities



King County

## Ship Canal Water Quality Project



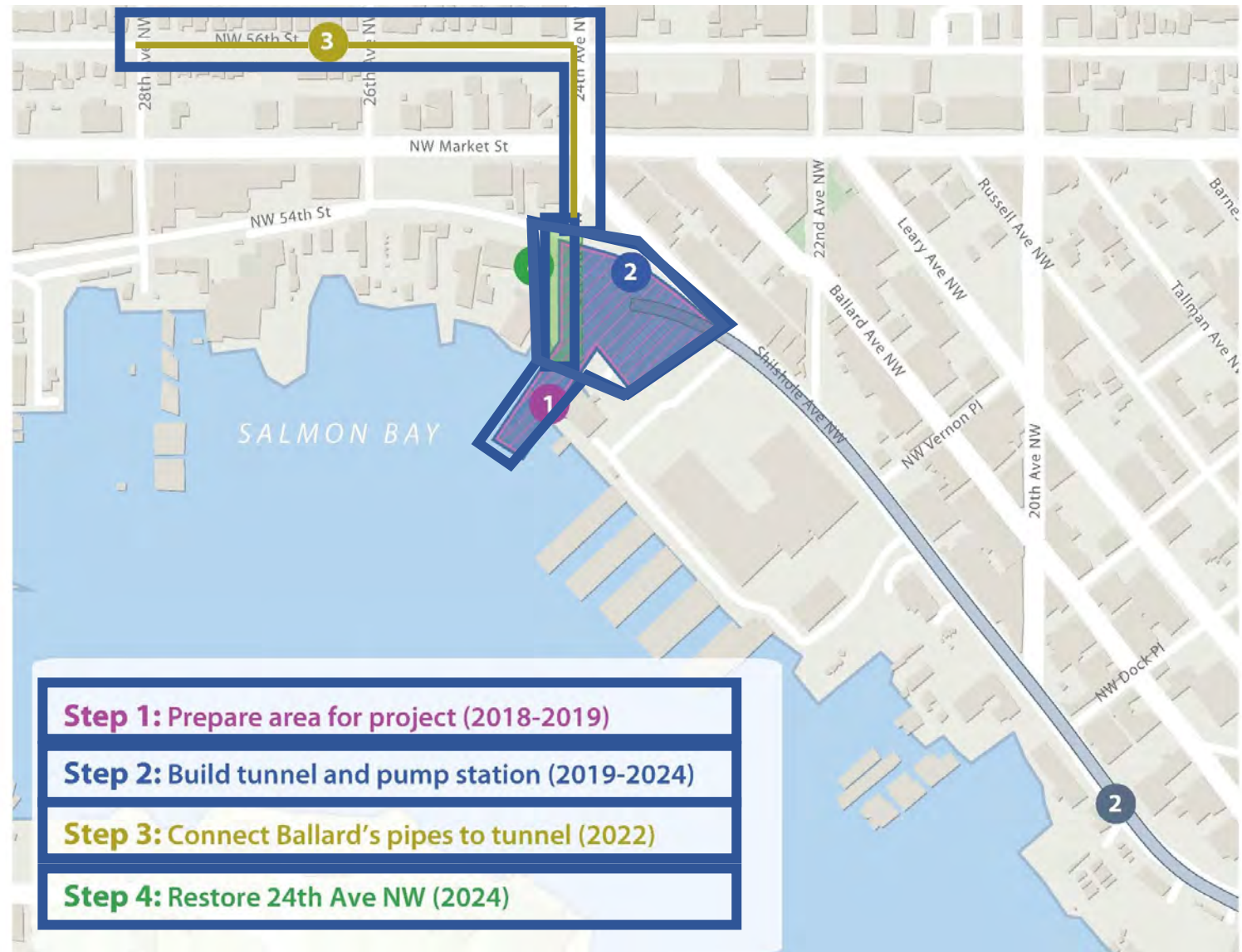
# Ballard

## Construction underway

- Construction hub
- SPU property: 24<sup>th</sup> and Shilshole Avenues NW

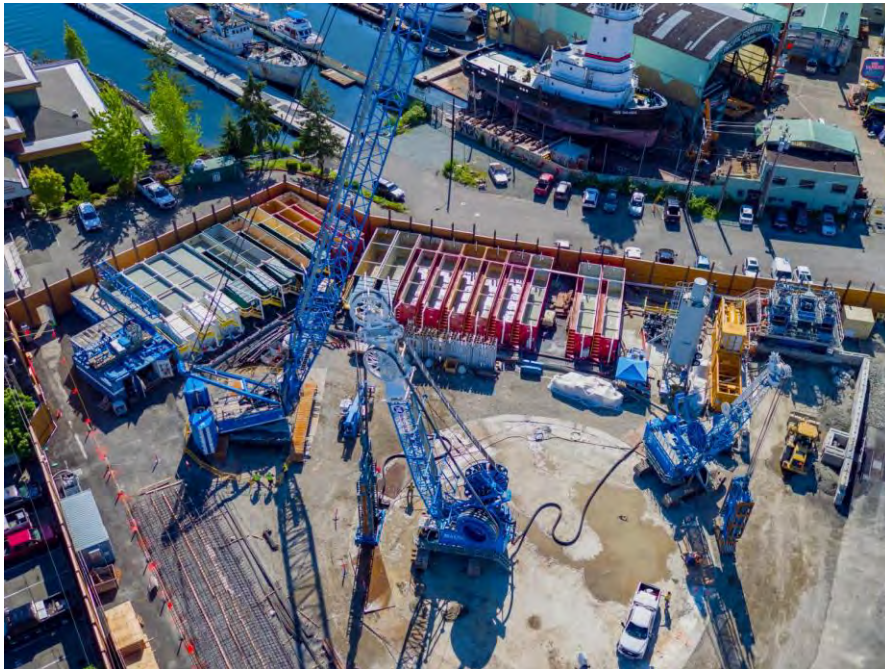
### During current construction:

- Heavy truck traffic and interruptions on Shilshole Ave NW for trucks entering the work zone, and 24th Ave NW for trucks exiting the site
- Parking restrictions along the east side of 24th Ave NW so construction trucks can exit the work site
- 24th Ave NW Pier periodically closed
- Possible night and weekend work



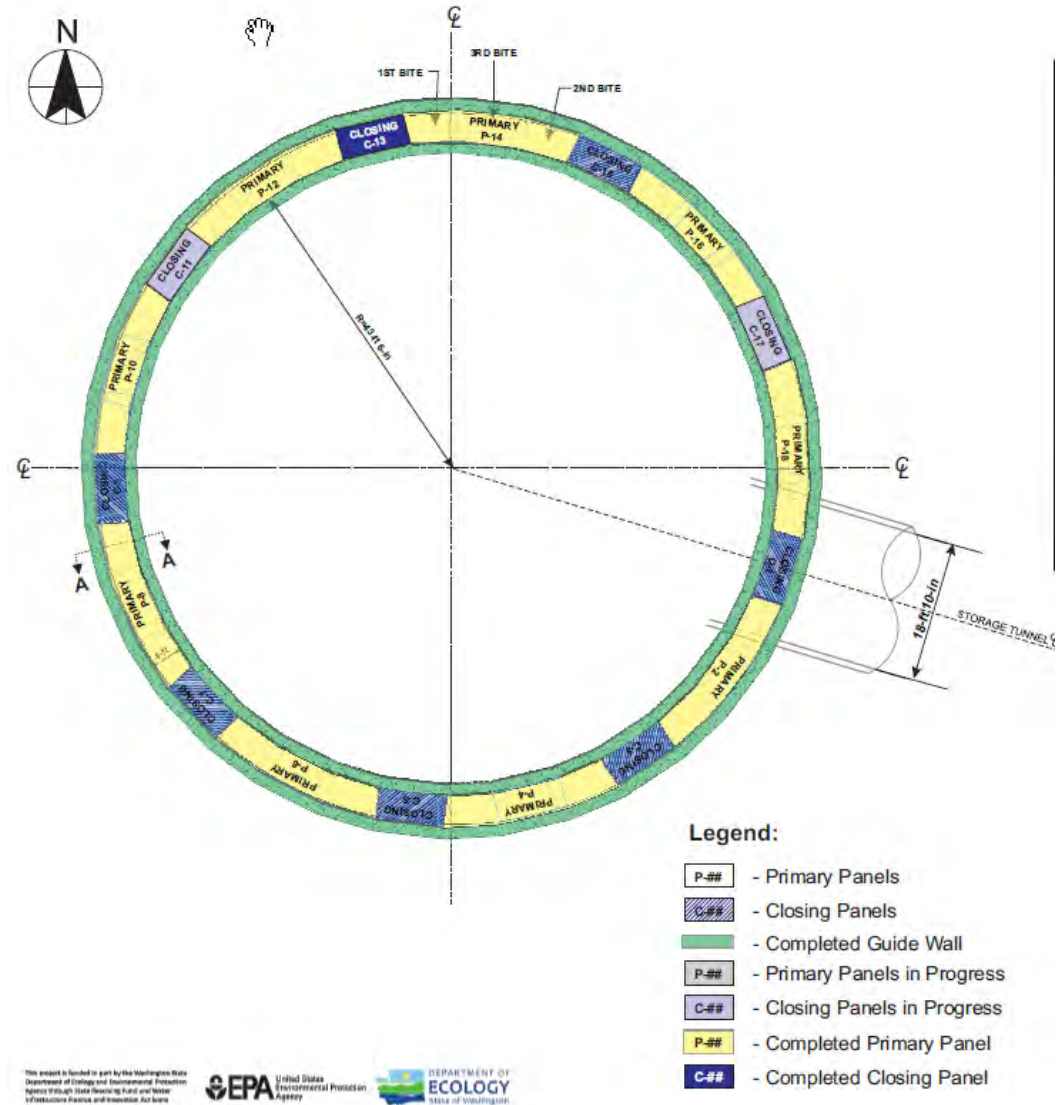


# Slurry Wall construction



# Slurry Wall panel layout

- 18 panels
- Each panel is 200 feet deep
- Rebar cages extend 147 feet deep
- Slurry wall is scheduled to be complete in early September



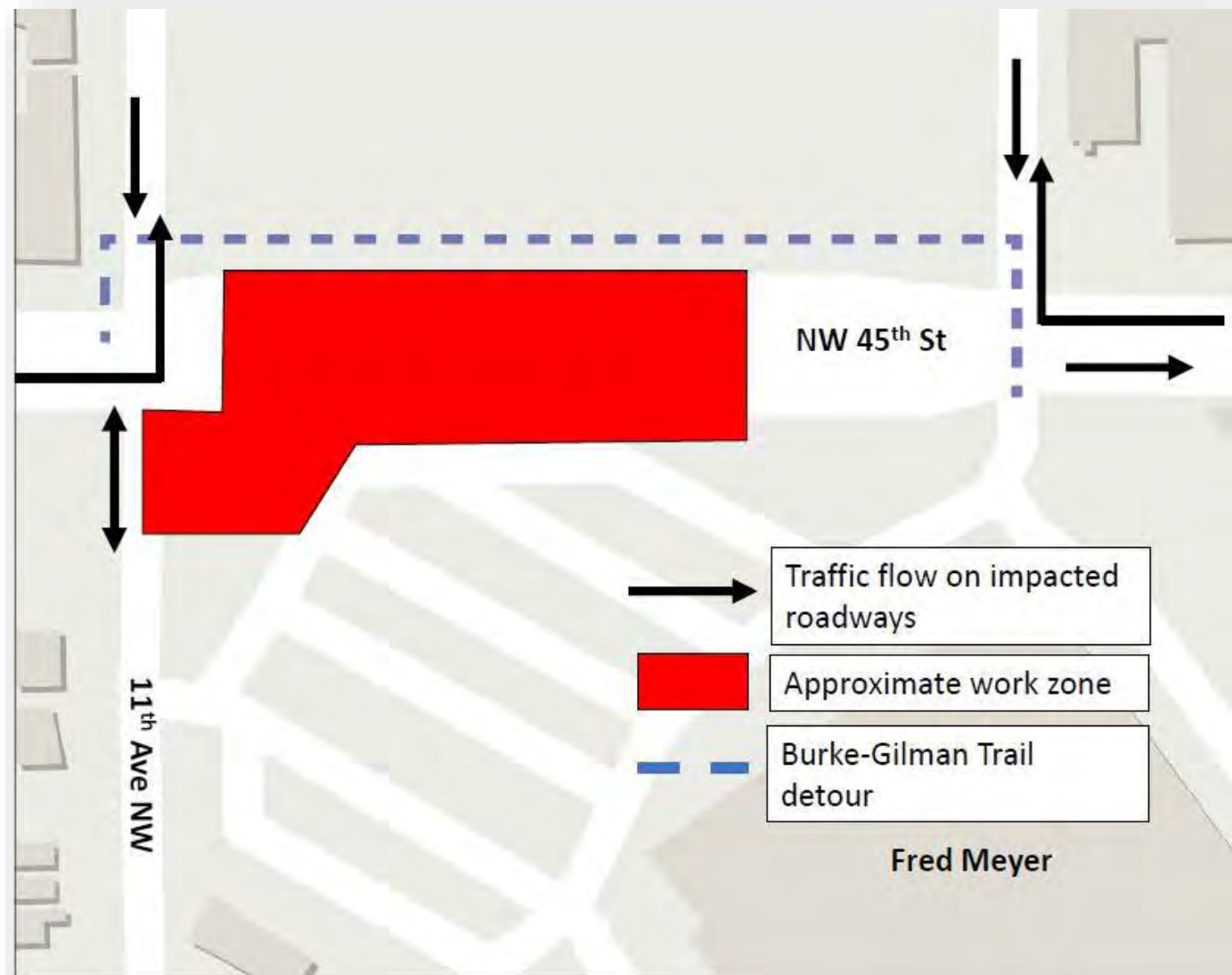


# East Ballard

## Construction underway

3 years of construction

- The Burke-Gilman Trail will be detoured to the north side of NW 45th St through 2022
- Traffic impacts to 11th Ave NW and NW 45th St, including one-lane and full-road closures, will occur intermittently now through 2022.



*Current traffic control through December, note roadways will be open Thanksgiving – New Year's*

# Progress at the East Ballard Site

- Jet Grout equipment set up  
Cement silos, mixers, pumps, and generators, and ponds for the jet grout return material
- Jet Grouting will begin this week using a large drill type rig
- Trucks for cement delivery and haul away jet grout return material
- Stone column work in 11<sup>th</sup> Ave starting mid-Sept





2/2/2007 11:54 AM

24<sup>th</sup> Avenue and Street End

Pump Station

Ballard Site

SPU's Ballard Property  
and 24<sup>th</sup> Avenue NW





# Ballard Pump Station

8/12/2020

Seattle Public Utilities



City of Seattle

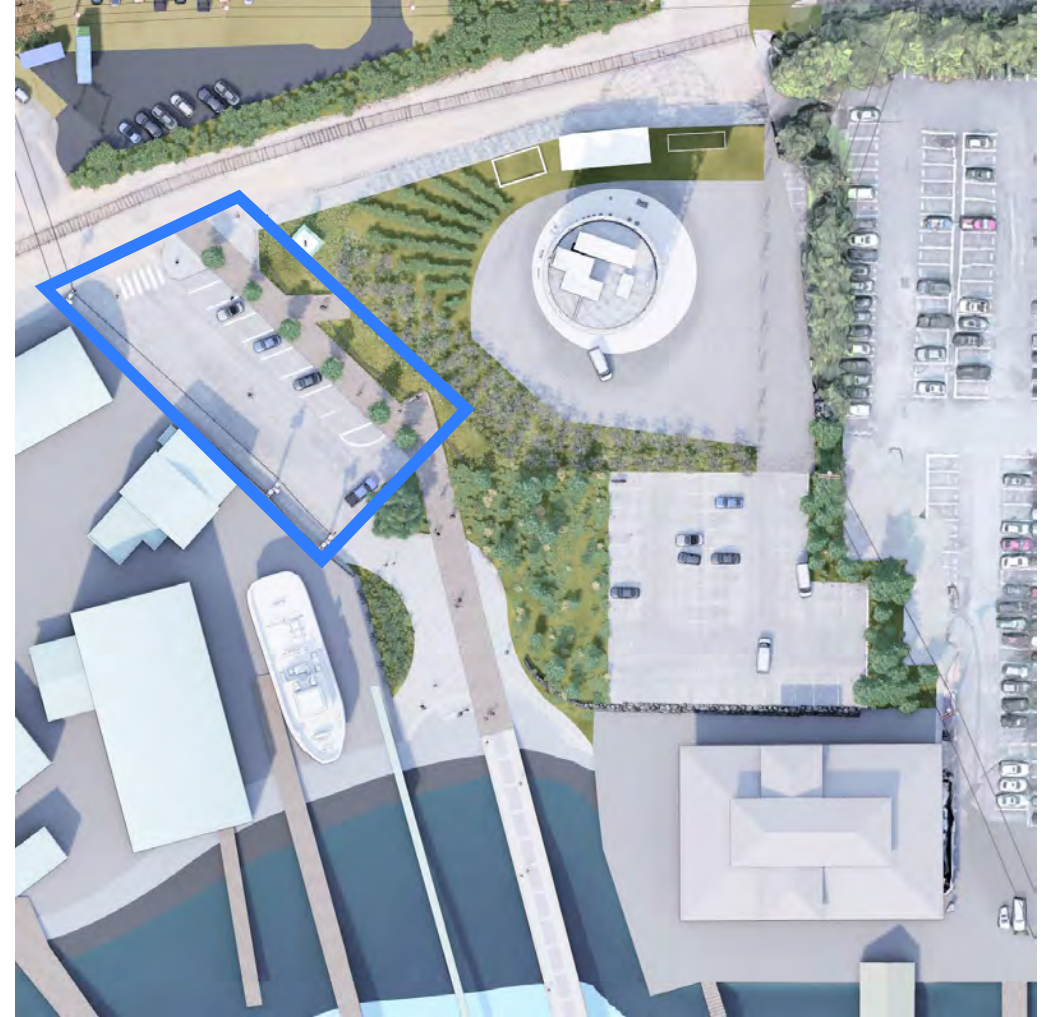
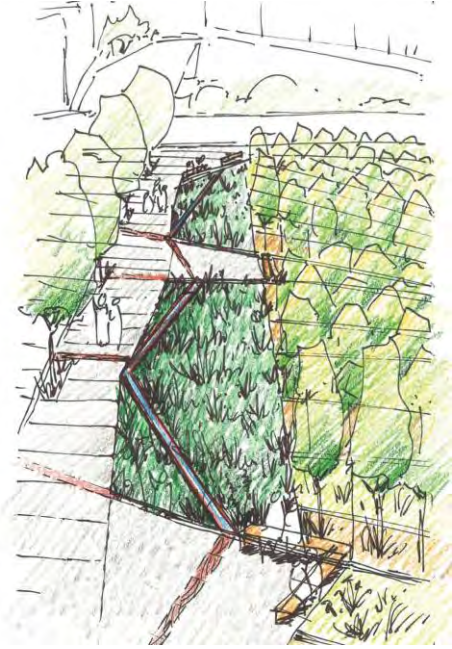


# Pump Station





# 24<sup>th</sup> Avenue Right of Way





# 24<sup>th</sup> Avenue Street End



# Public Art



## PUBLIC ART for the Ship Canal Water Quality Project

### KEY POINTS:

Public art projects will be incorporated throughout the SCWQP.

Some art projects will be temporary works that unfold during construction, others will be permanent artwork integrated into sites.

Public art planning for the SCWQP is part of the Drainage and Wastewater Art Master Plan.

Holistic values, concepts, and goals for public art are articulated in the Art Master Plan.



# SHIP CANAL WATER QUALITY PROJECT



TUNNEL ALIGNMENT  
DETAIL MAP

## TUNNEL ALIGNMENT PROJECTS



West Shaft Site/ Tunnel Effluent Pump Station



11th Avenue NW Drop Shaft Location



Fremont Siphon Area



East Shaft Site/Interlake Avenue North

## GOALS for the SCWQP Public Art

- Increase public awareness of the function of water quality projects and infrastructure
- Make an invisible system more visible
- Connect people to the flow of water in city and home, and their own place in their local ecology
- Ask big questions and delve deeply into issues of how humans, water and many things in between relate to each other
- Be at the forefront of public art practice
- Create meaningful, inspiring, thought-provoking art experiences in the public realm, both during construction and as a permanent part of the urban landscape





# FLOW 2020

Wallingford East Shaft Site

**Kaylee Nelson & Crystal Christopherson**

*MMIW*

Fremont

**Minh Carrico** (installation August 19)

*TATTARRATTAT*

East Ballard

**Katie Miller**

*Crossing*

Ballard West Shaft Site

**Angie Yusuf Hinojos & Carlos Jimenez**

*CHAAC*





# Permanent Artworks



Wallingford East Shaft Site  
**RYAN! Feddersen**



Fremont/Queen Anne  
**Preston Singletary and  
David Franklin**



# 24<sup>th</sup> Avenue Pier Art - Christian French





# Temporary Art at Ballard



Chaac

Angie Hinojos Yusuf & Carlos Jimenez



# Connective Thread



The streets are our watershed, and our watershed drains to the Salish Sea. *Salish Sea Streets* combines multiple voices, multiple sites, all connected by water. It links the intimate scale of streetscape with the immense scale of the Salish Sea. Artworks in the sidewalks will be a "connective thread" between locations and other artworks around the Ship Canal, while also creating visual portals to the Salish Sea.

Vaughn Bell Studio



# BALLARD WATER PUMP STATION CONCEPT: OCTOPUS WOMAN BLESSING FIGURE

Design & Concept by Jeffrey Veregge, January 2020



# Ballard Water Pump Station Concept: Octopus Woman Blessing Figure

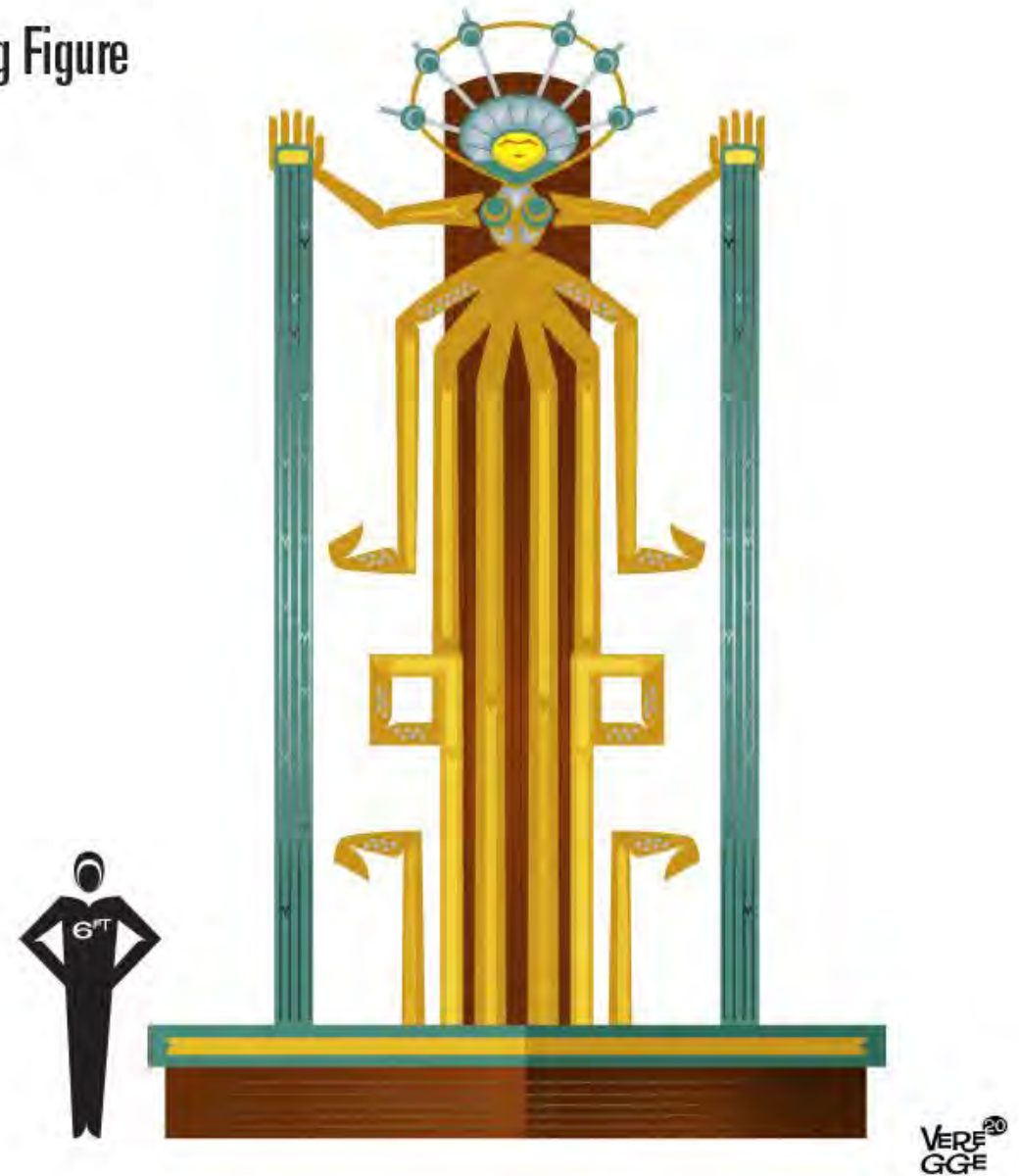
Design & Concept by Jeffrey Veregge, January 2020

## OCTOPUS WOMAN

- Ship Prow; Reflective Design of both Salish & Seafaring people of the Ballard area.
- The Octopus is an important part of the diet and lore of Salish peoples and important part of the overall health of Puget Sound.
- Underutilized as a motif.

## CONSTRUCTION & MATERIALS

- 24 ft tall
- Ship Prow. The Materials used would help reinforce the design concept. Dark Cedar, White & Yellow Bronze.
- Clean, classic in spirit would use Serial Plane as the basis for construction.



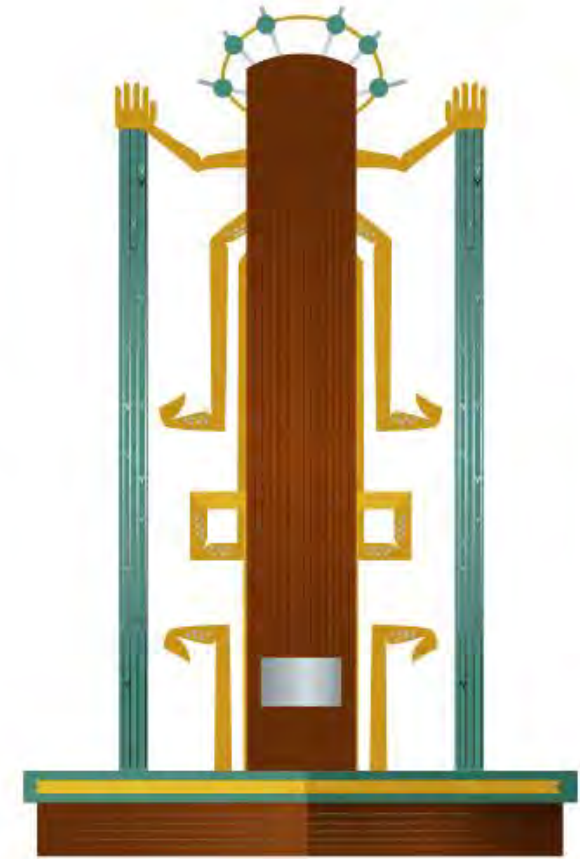
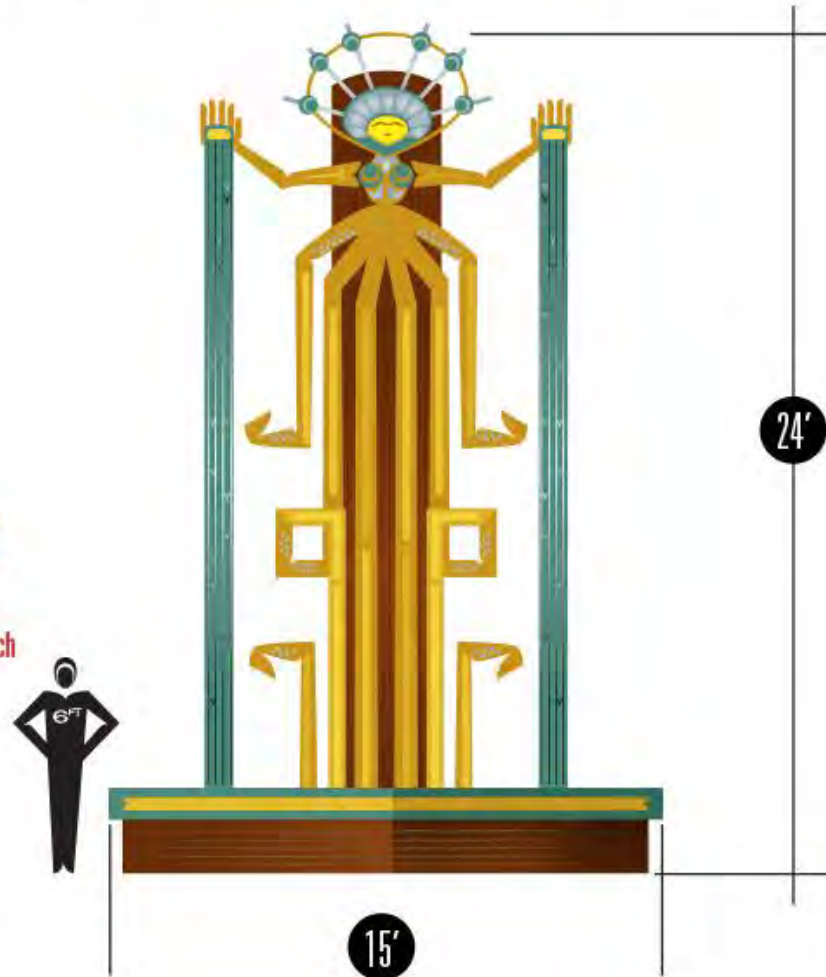


# Ballard Water Pump Station Concept: Octopus Woman Blessing Figure

Design & Concept by Jeffrey Veregge, January 2020



**Serial Plane:** Accordingly, to construct a volumetric form, we can think in terms of its cross sections. In other word, how the form can be sliced up to regular intervals, which will result in serial planes. - Each serial plane which will be considered as a unit form.



VEREGGE<sup>20</sup>







# Questions?

[Stephanie.secord@seattle.gov](mailto:Stephanie.secord@seattle.gov)

[Kelsey.hinsperger@seattle.gov](mailto:Kelsey.hinsperger@seattle.gov)

Sign up for updates: [spushipcanal.participate.online](https://spushipcanal.participate.online)

