

Reducing sewer overflows by 2025

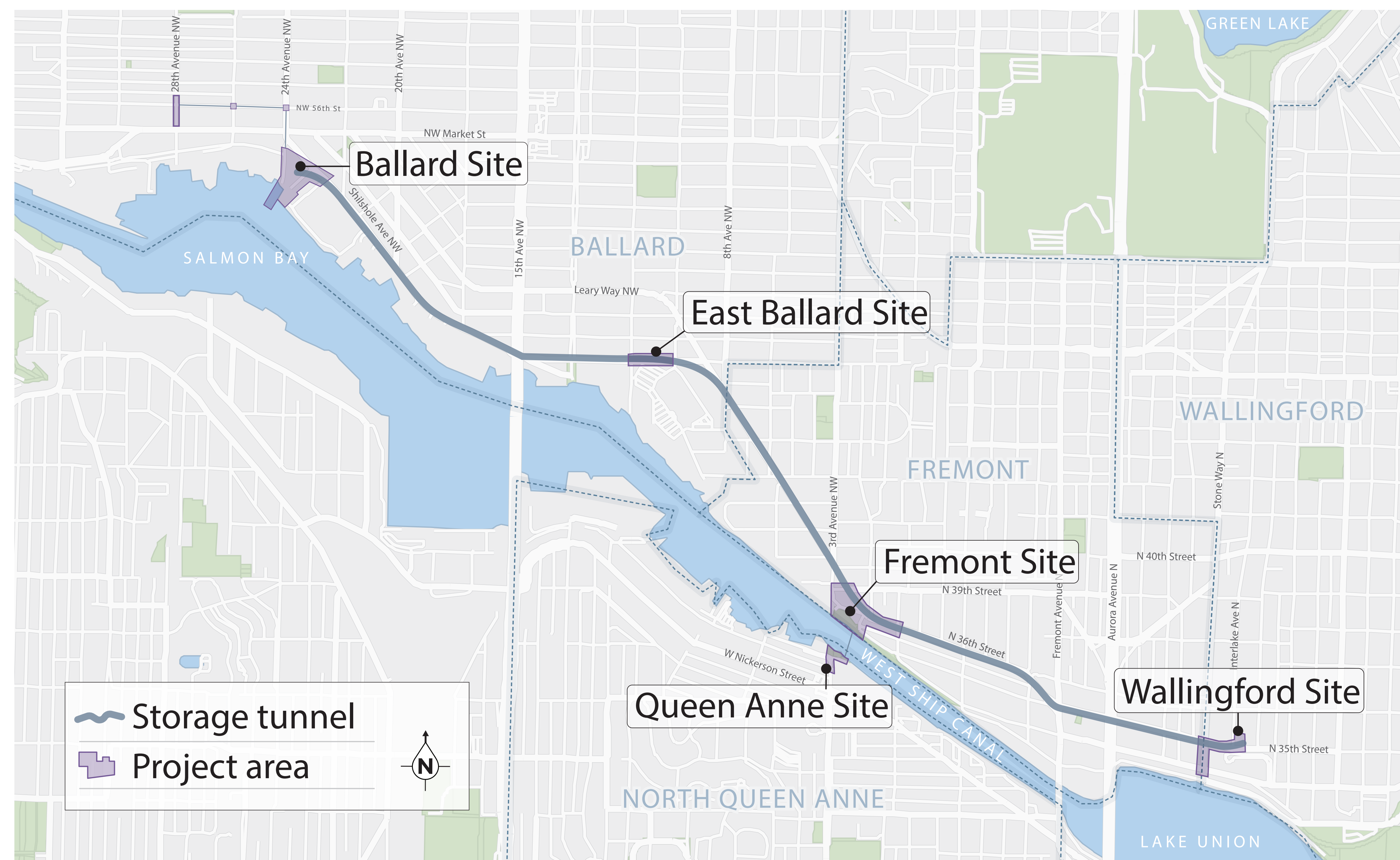
The Ship Canal Water Quality Project is an **underground 2.7-mile, 18-ft and 10-inch internal-diameter tunnel** that will:

- **Reduce the amount of polluted stormwater and sewage** that flows into the Lake Washington Ship Canal, Salmon Bay, and Lake Union by 2025
- Capture and temporarily store more than **29 million gallons of untreated stormwater and sewage** during heavy storms

The tunnel will run from Ballard to Wallingford, collecting stormwater and sewage from **Ballard, East Ballard, Fremont, Queen Anne, and Wallingford**.

Ballard project schedule

- **Early 2020:** Begin tunnel launch shaft construction
- **Mid-2021:** Begin tunneling
- **2022:** Begin new pipe construction along NW 56th St, 28th Ave NW, and 24th Ave NW
- **2023:** Begin Pump station construction
- **2024:** Art installation



The Ship Canal Water Quality Project spans from Ballard to Wallingford

Fun fact

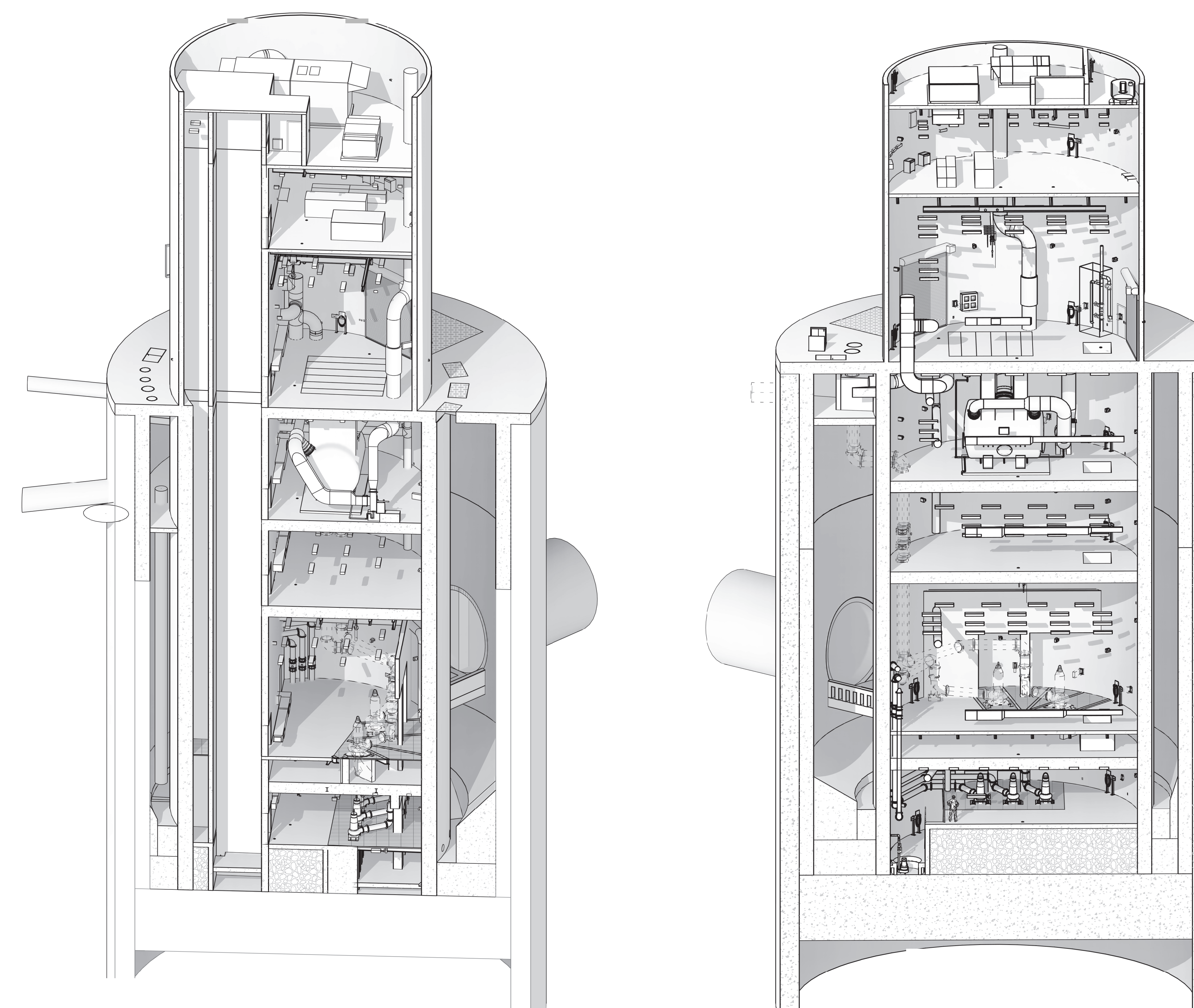
When completed, this project will keep more than 75 million gallons of polluted water out of the Ship Canal, Salmon Bay and Lake Union each year. That's enough water to fill more than 110 Olympic-sized swimming pools!

Ballard will be home to the western end of the tunnel and the facilities operating the entire tunnel system. Tunnel boring will start at this site and move toward Fremont and Wallingford.

The site will also be home to the **Ballard Pump Station**, which will be a 65-foot illuminated tower that will house above- and below-ground mechanical equipment and odor control.

Ballard project elements

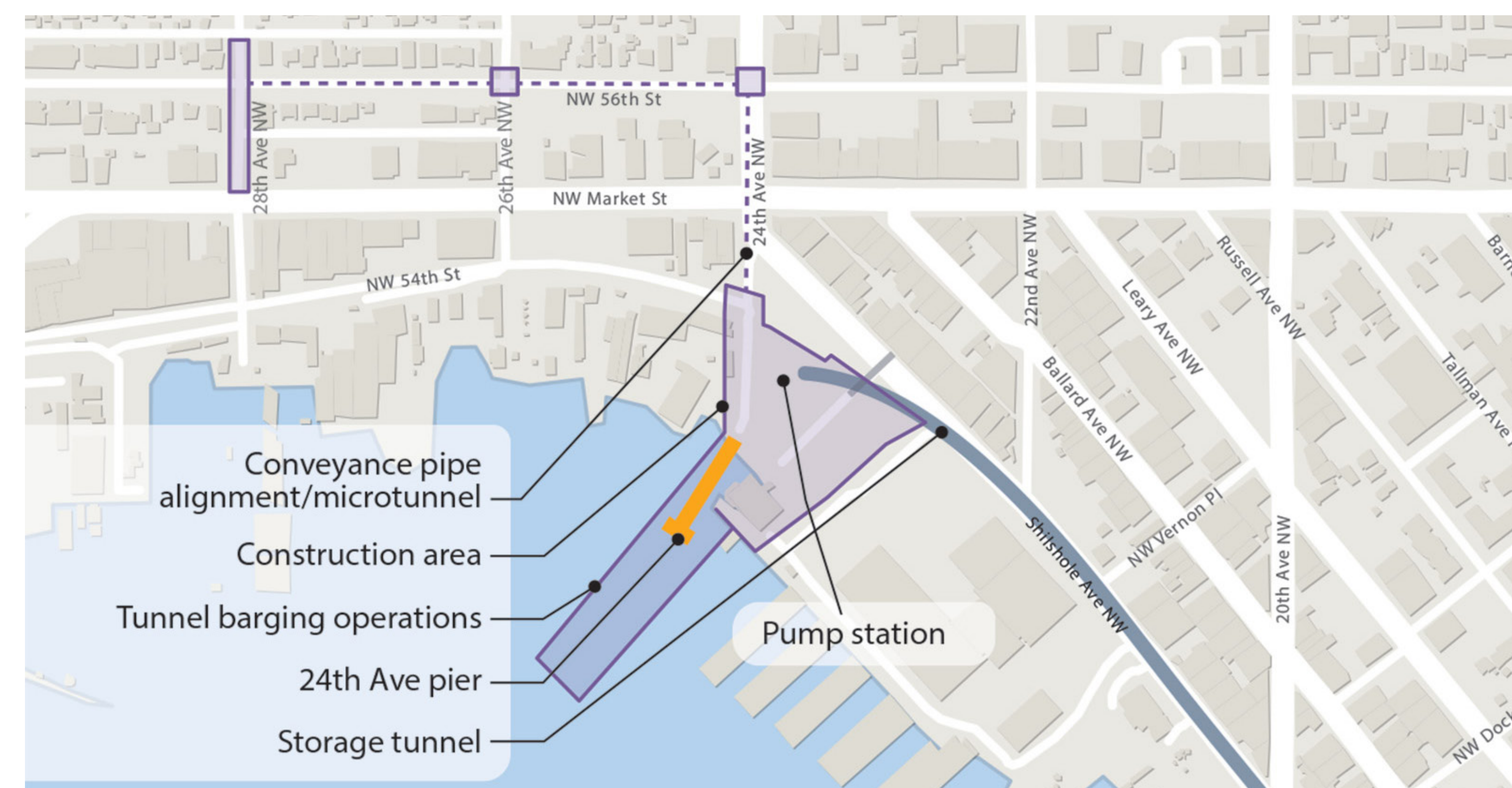
- A new 100-ft deep, 90-ft diameter shaft to hold pump station equipment and carry sewage and stormwater into the new tunnel
- New pipes along NW 56th St, 28th Ave NW, and 24th Ave NW to connect the shaft to Ballard's existing combined sewer system
- A large pump station that will take the flows from the tunnel and send them to West Point for treatment



Pump station diagram - 3D view looking NE (left) and SE (right)



24th Avenue NW pier



Ballard project map

Tunnel construction impacts

What to expect starting January 2020

- Increased noise, vibration, and dust
- Occasional heavy traffic from large trucks entering and exiting the site
- Closure of the 24th Ave NW pedestrian pier through 2024
- Parking restrictions adjacent to the work zone
- Potential for night and weekend work to minimize traffic impacts to the neighborhood
- Large equipment excavating on site
- Security fencing around the project area

How we will work with you during construction

- **Project briefings** with community groups
- **Door-to-door flyering** to notify nearby neighbors of upcoming construction impacts
- **Frequent website updates** at SPUShipCanal.participate.online
- **Monthly email construction updates** - sign up tonight or on our website

Contact us

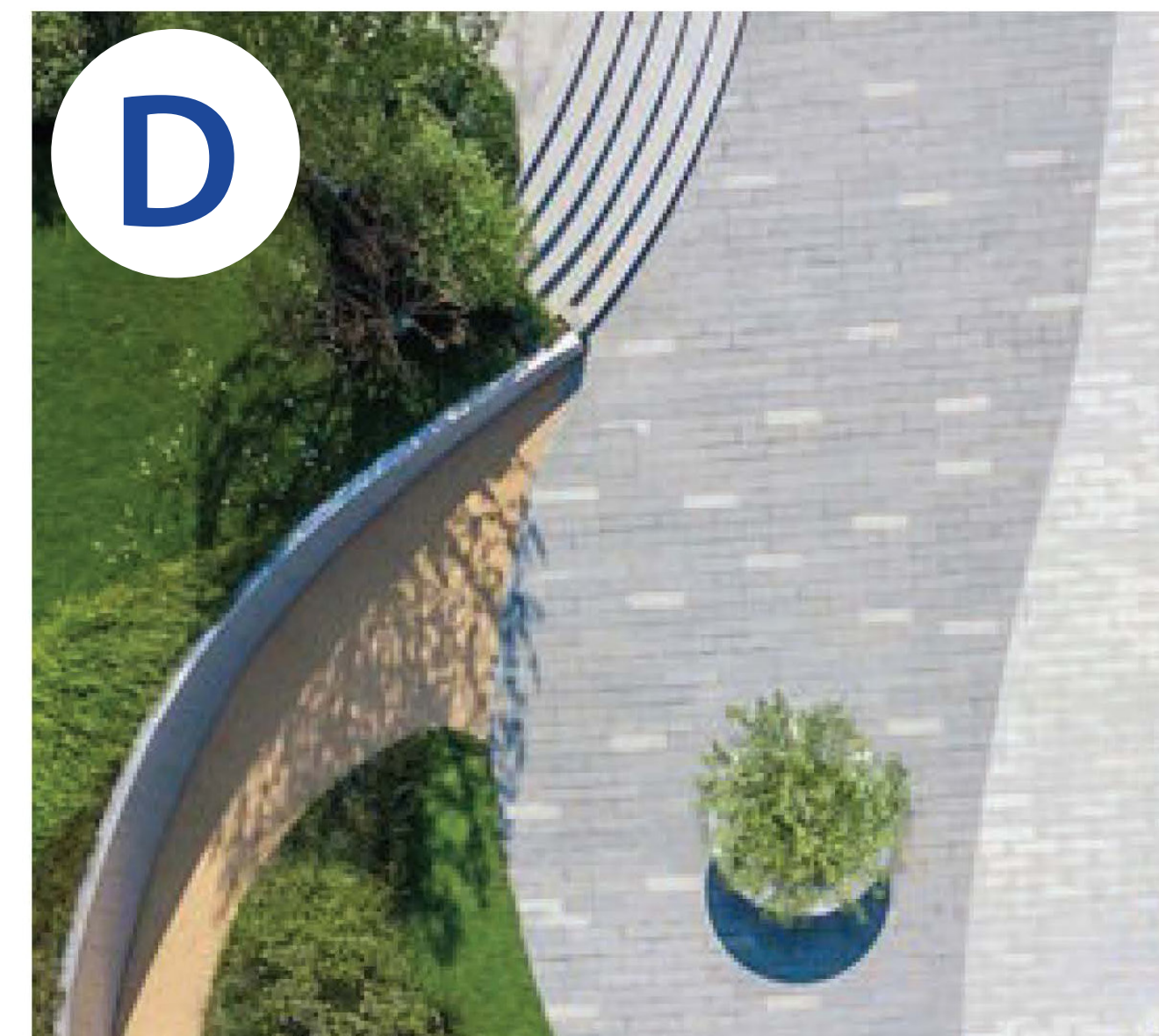
Email us: SPU_ShipCanalProject@seattle.gov

Visit us: SPUShipCanal.participate.online

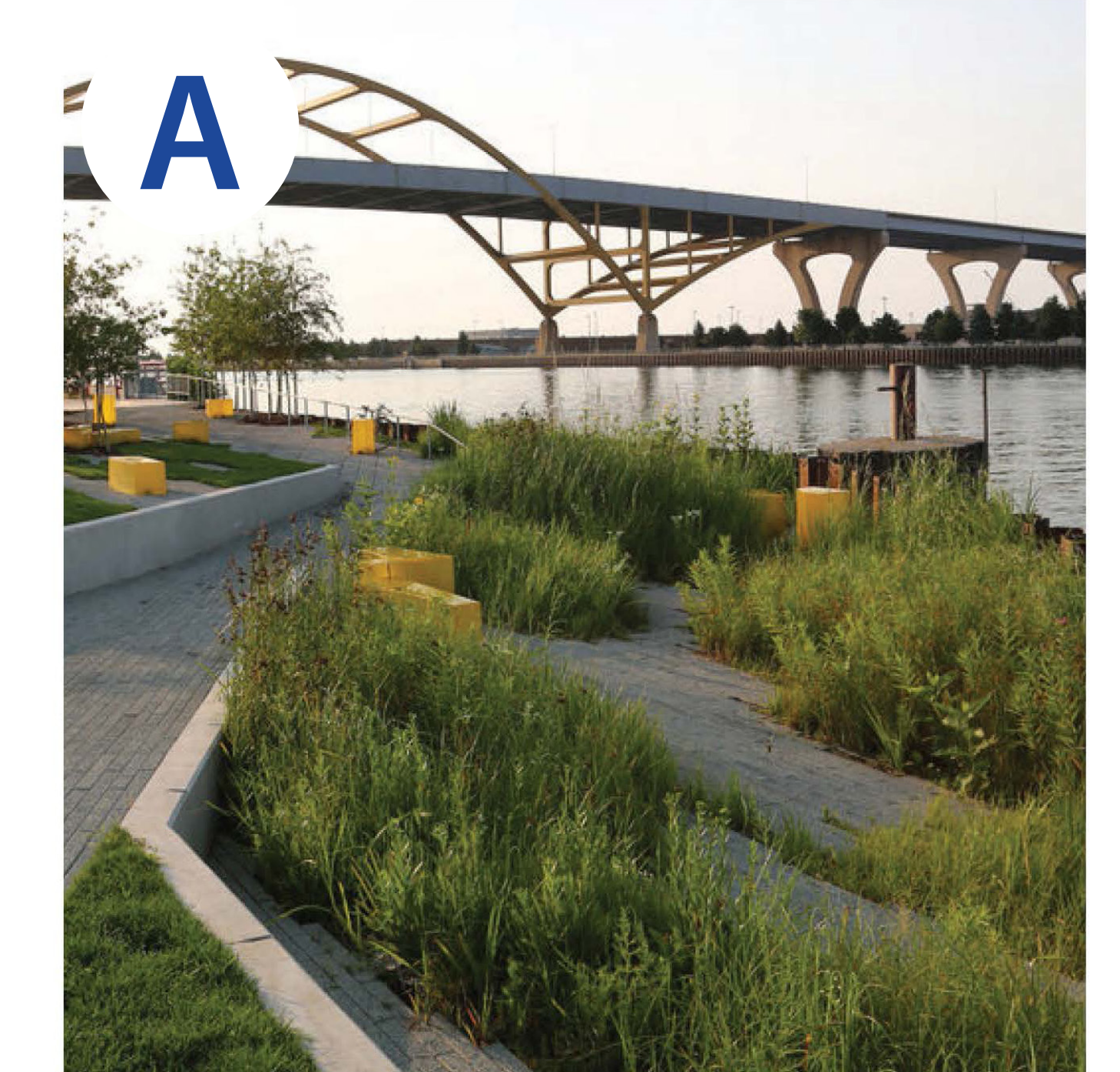


Construction to prepare for tunneling took place earlier this year

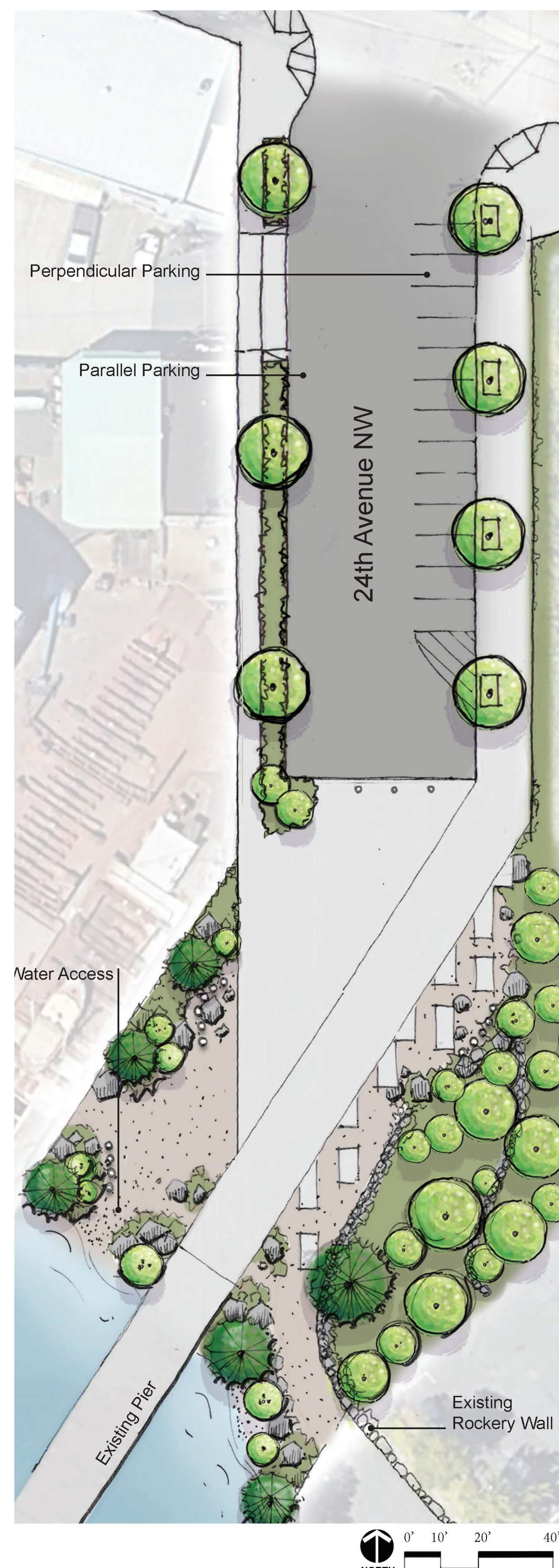
Concept 1: Flow



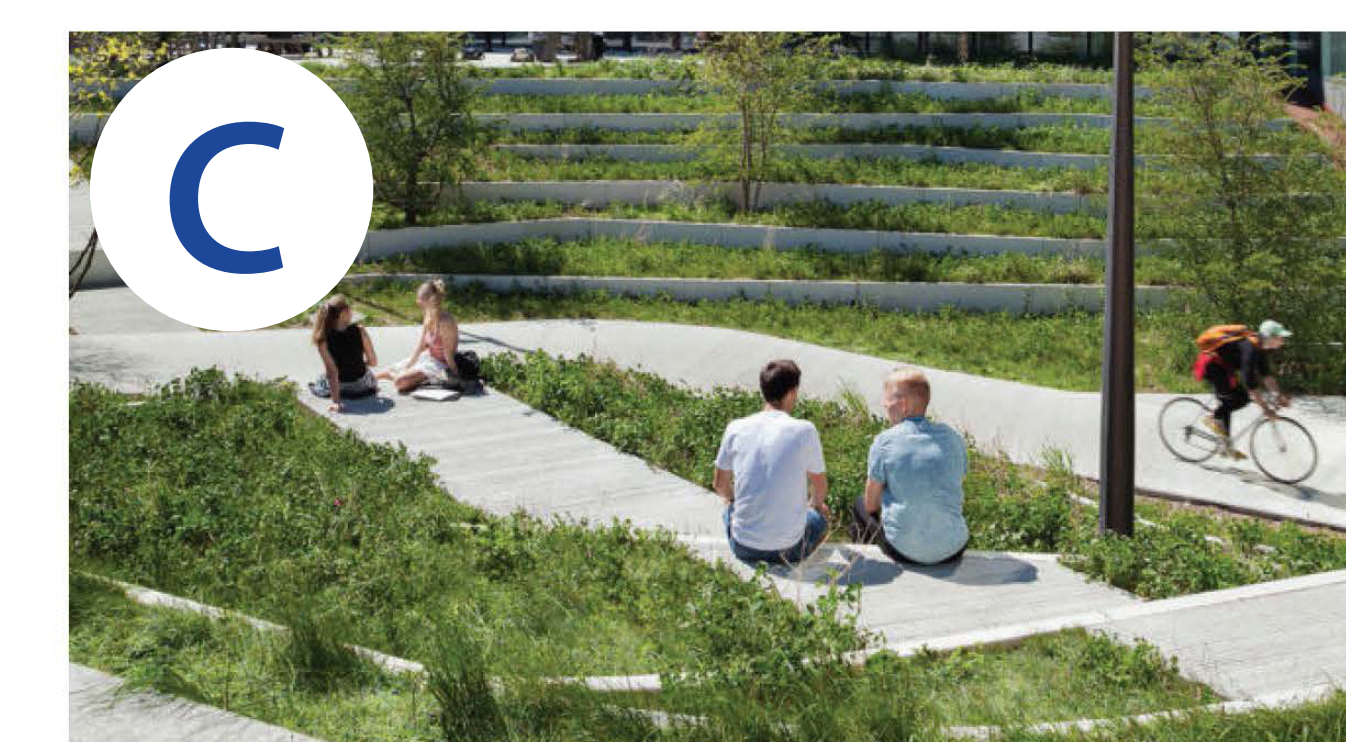
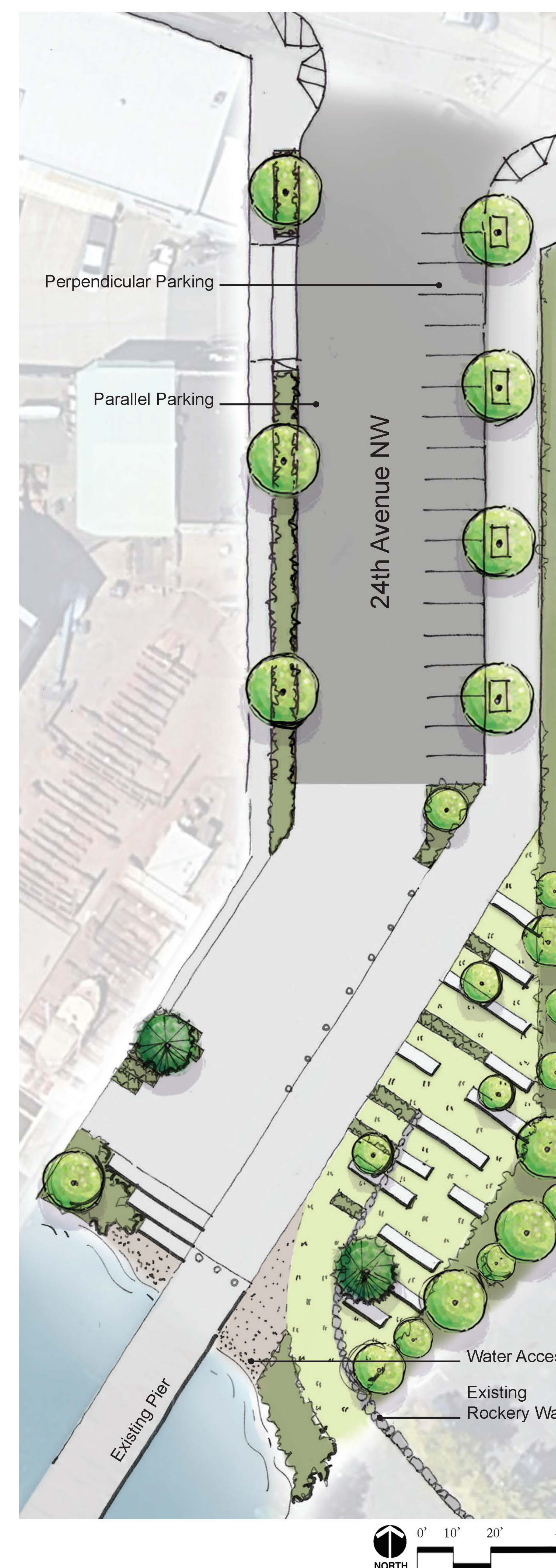
Concept 2: Edge



Concept 3: Shore



Concept 4: Terrace



Ballard site design

The Ship Canal Water Quality Project purchased property in Ballard for the **tunnel's west end and pump station, and for construction activities.**

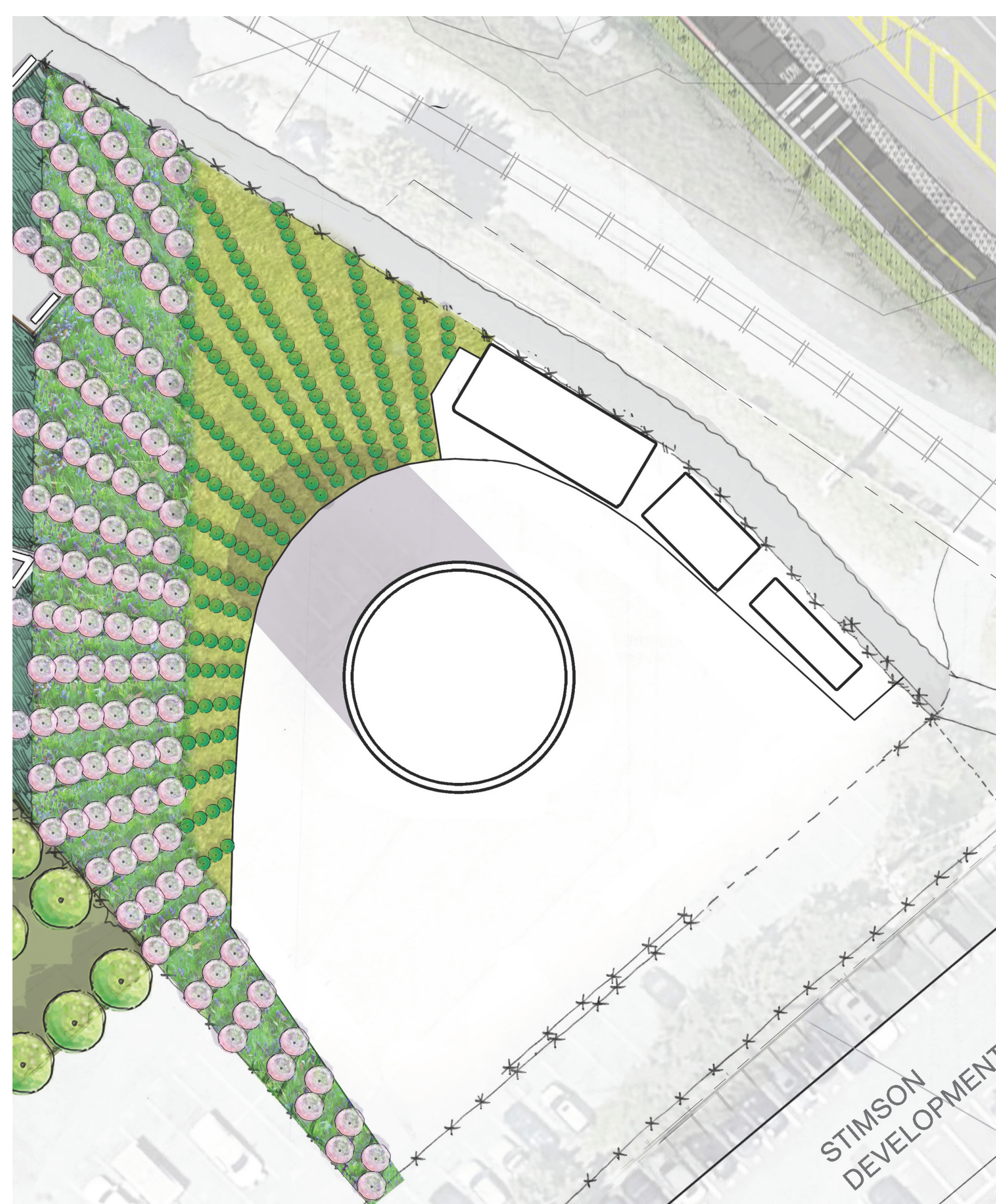
Currently we have draft designs for the northern part of the Ballard properties and the 24th Ave NW street end. **These two areas will be constructed by the end of 2025.**



Pump station building

Ballard Pump Station

In 2025, there will be a large pump station at 24th Ave NW and NW Shilshole Ave. It will be called the “Ballard Pump Station” and will drain the storage tunnel, sending the combined stormwater and sewage to King County’s wastewater treatment plant at West Point.



Pump station site plan



Pump station rendering

24th Ave NW right-of-way

Most construction activities for the Ship Canal Water Quality Project will take place on or near our Ballard property at 24th Ave NW and NW Shilshole Ave. **The right-of-way on 24th Ave NW, south of NW 54th St will be heavily impacted by construction.** The right-of-way will be restored once construction is over in 2025.

Please see our draft concept designs and provide feedback.