



Seattle  
Public  
Utilities



King County

# Friends of Street Ends Presentation

Alan Lord, Project Manager

Tunnel Effluent Pump Station + Ballard Conveyance  
Project

November 9, 2021



This project is funded in part by the Washington State  
Department of Ecology and Environmental Protection  
Agency through State Revolving Fund and Water  
Infrastructure Finance and Innovation Act loans



United States  
Environmental Protection  
Agency



DEPARTMENT OF  
ECOLOGY  
State of Washington

Seattle Public Utilities



City of Seattle

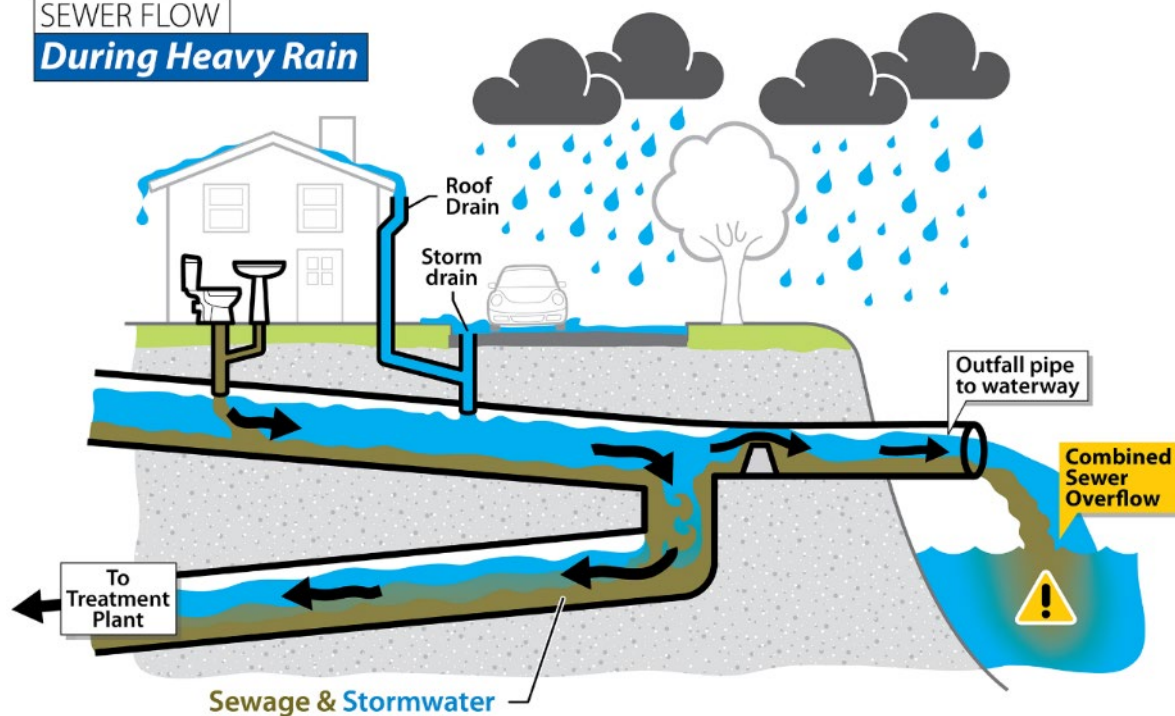
# Agenda

- Program overview
- Project Update

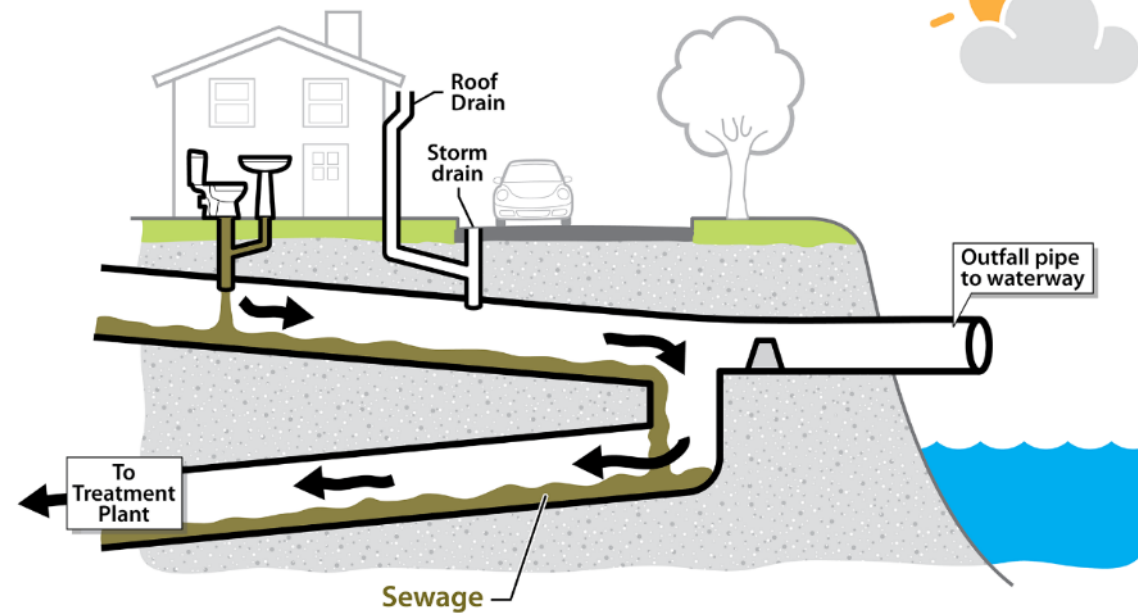


# Combined Sewer Overflows

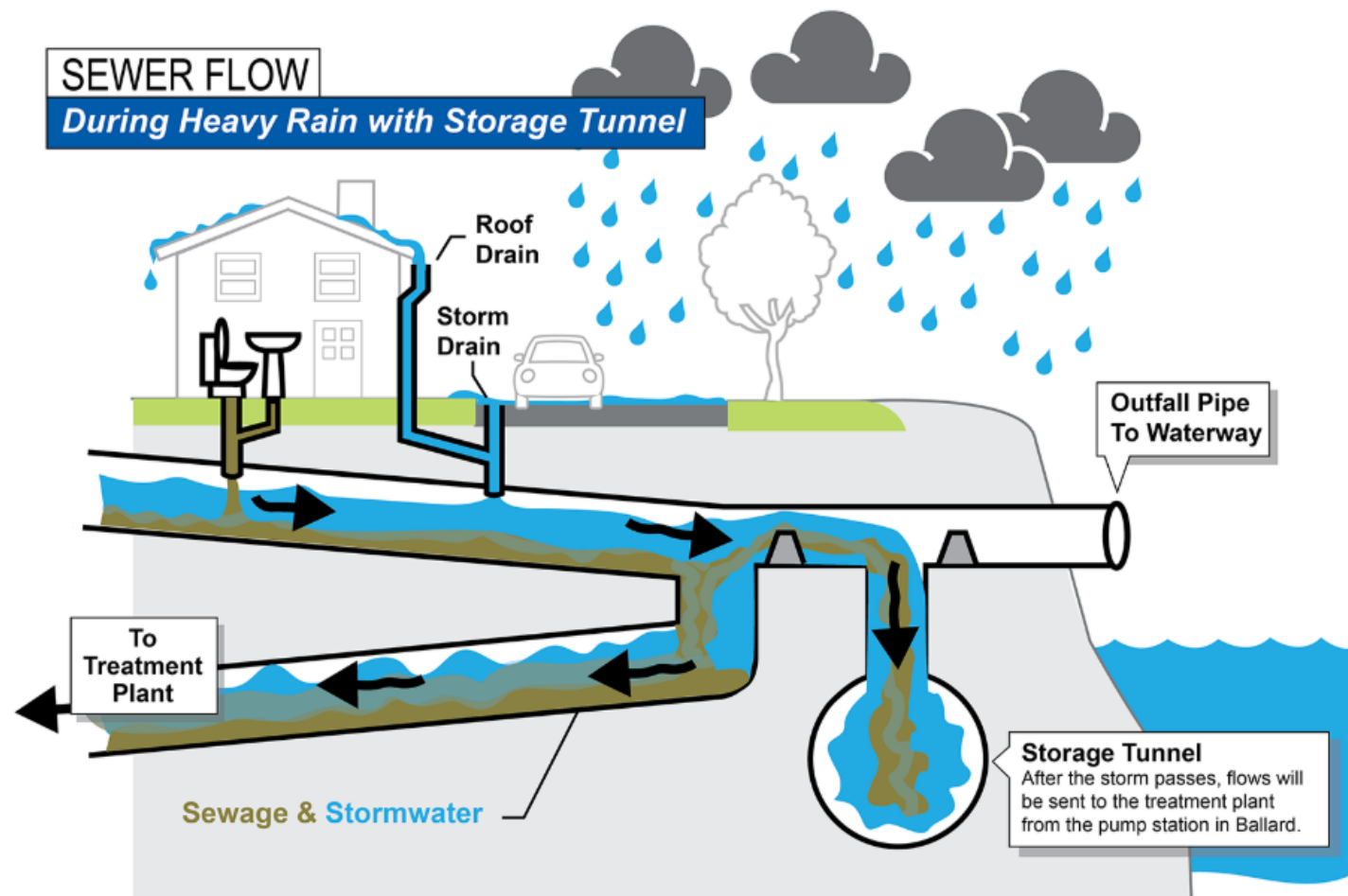
SEWER FLOW  
During Heavy Rain

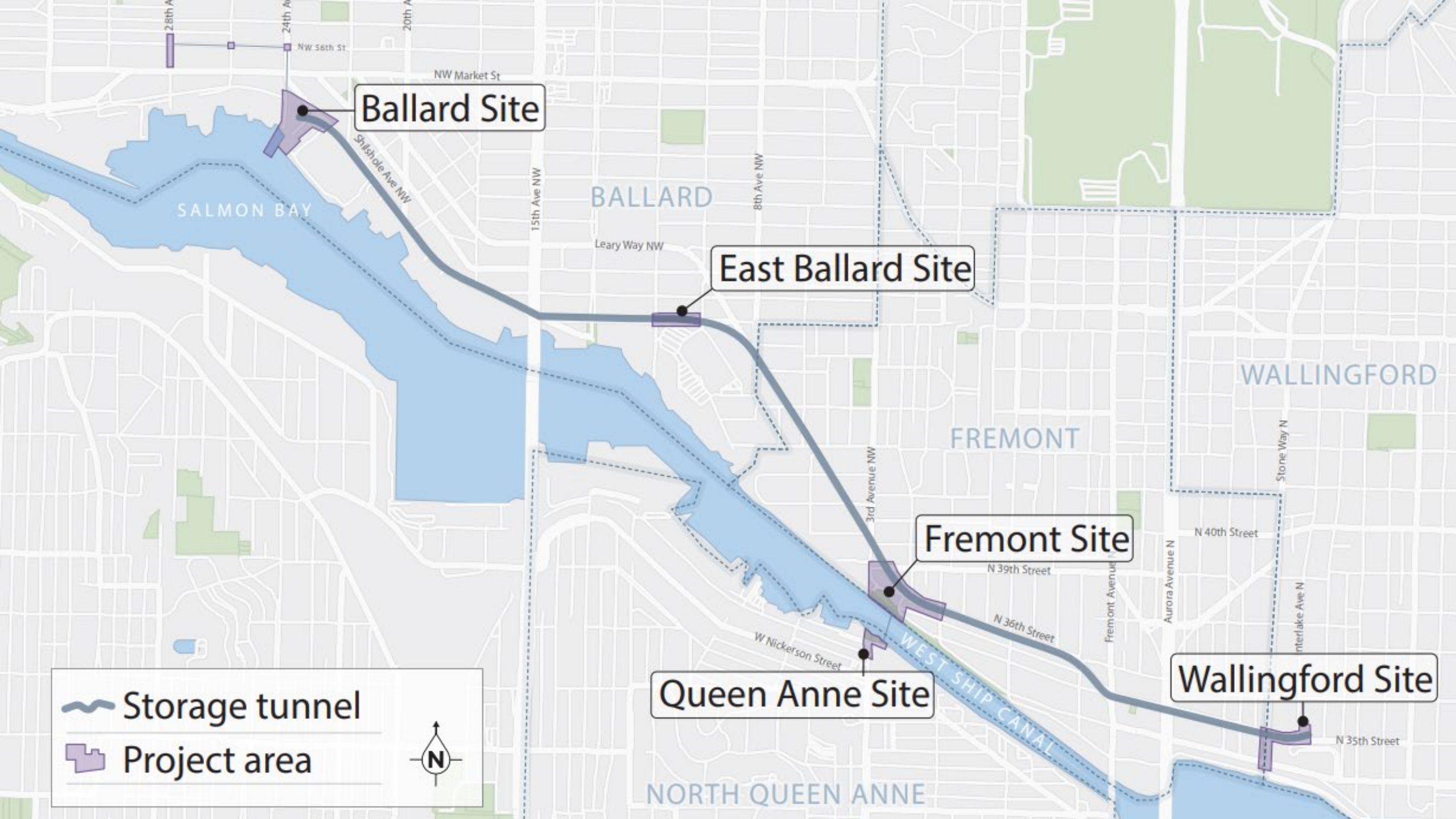


SEWER FLOW  
During Dry Weather



# How a tunnel helps







# Program Status

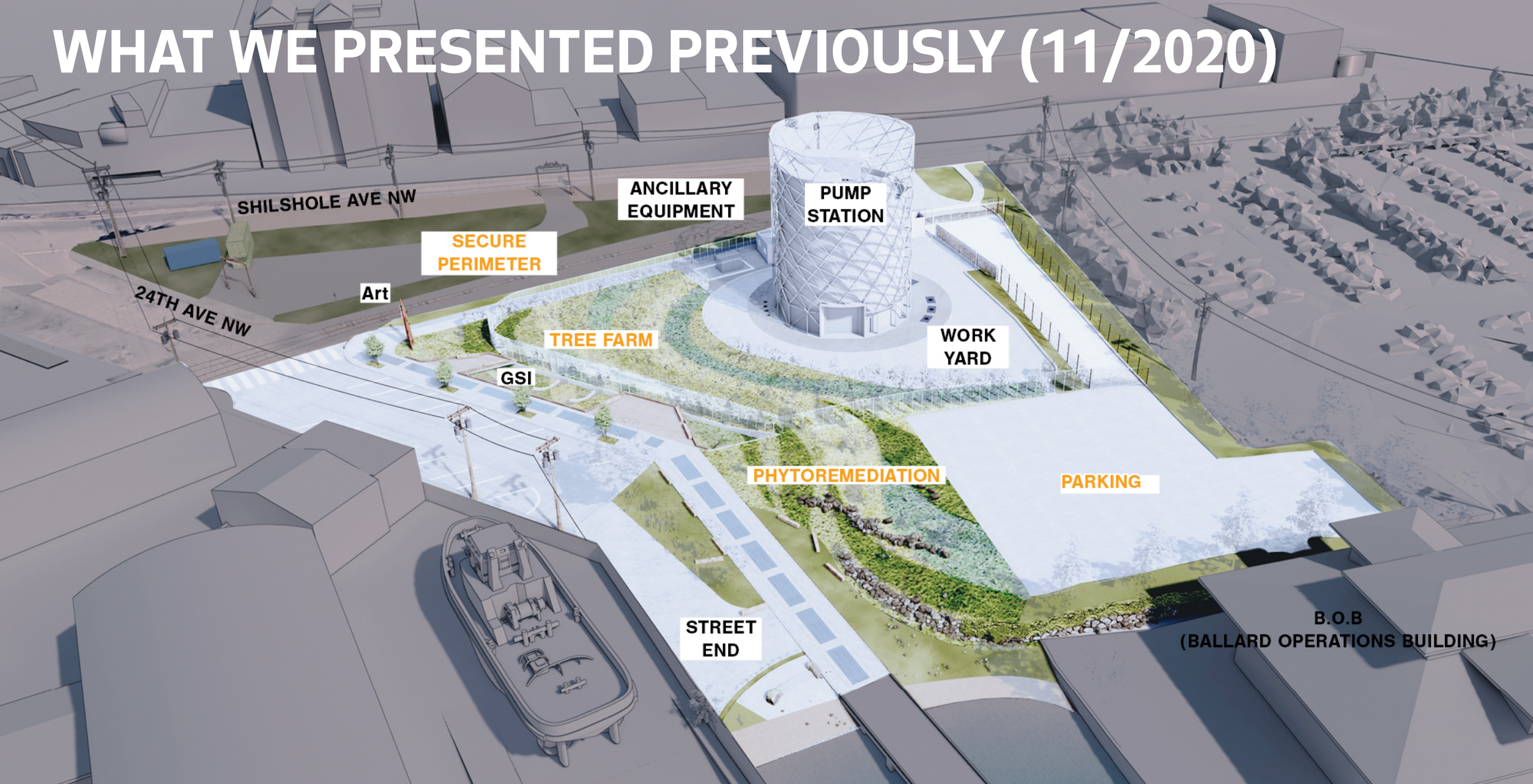
CONTRACT \ YEAR	2018	2019	2020	2021	2022	2023	2024	2025
Overall Program w/Consent Decree Milestones			◆	◆	◆			◆
Ballard Early Work Project (BEWP)	Des	Construction						
Advanced Utilities	Design	Construction						
Storage Tunnel	Design	Construction	Construction	Construction	Construction			
Tunnel Effluent Pump Sta. (TEPS)	Design	Design	Design	Design	Design	Construction	Construction	
Ballard Conveyance		Design	Design	Design	Design	Construction	Construction	
Wallingford Conveyance		Design	Design	Design	Design	Construction	Construction	



# Tunnel Effluent Pump Station Project Update



# WHAT WE PRESENTED PREVIOUSLY (11/2020)





# What we heard

- Pavement stamping or coloring for Pac Fish driveway to (a) break up the large concrete area, and (b) designate that the driveway is different than the pedestrian area.
- Signage for the 24<sup>th</sup> Ave street end, specifically signs designating it as a public SUP/kayak launch area.
- Maximize current and future public waterfront connections, including a potential park.



# Updated Site Plan

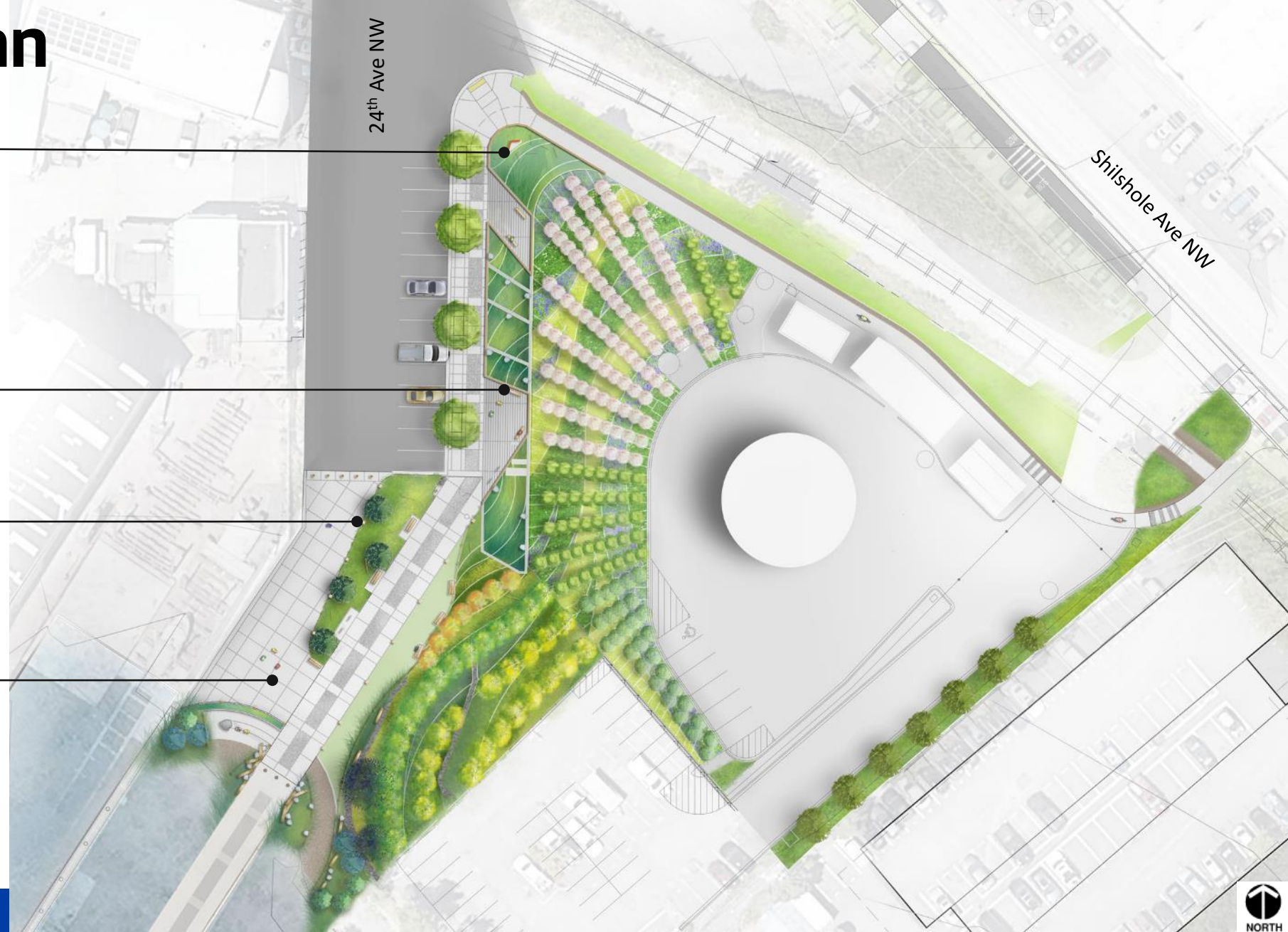
Updates:

Public art

Site furnishings

Site lighting

Street end refinements



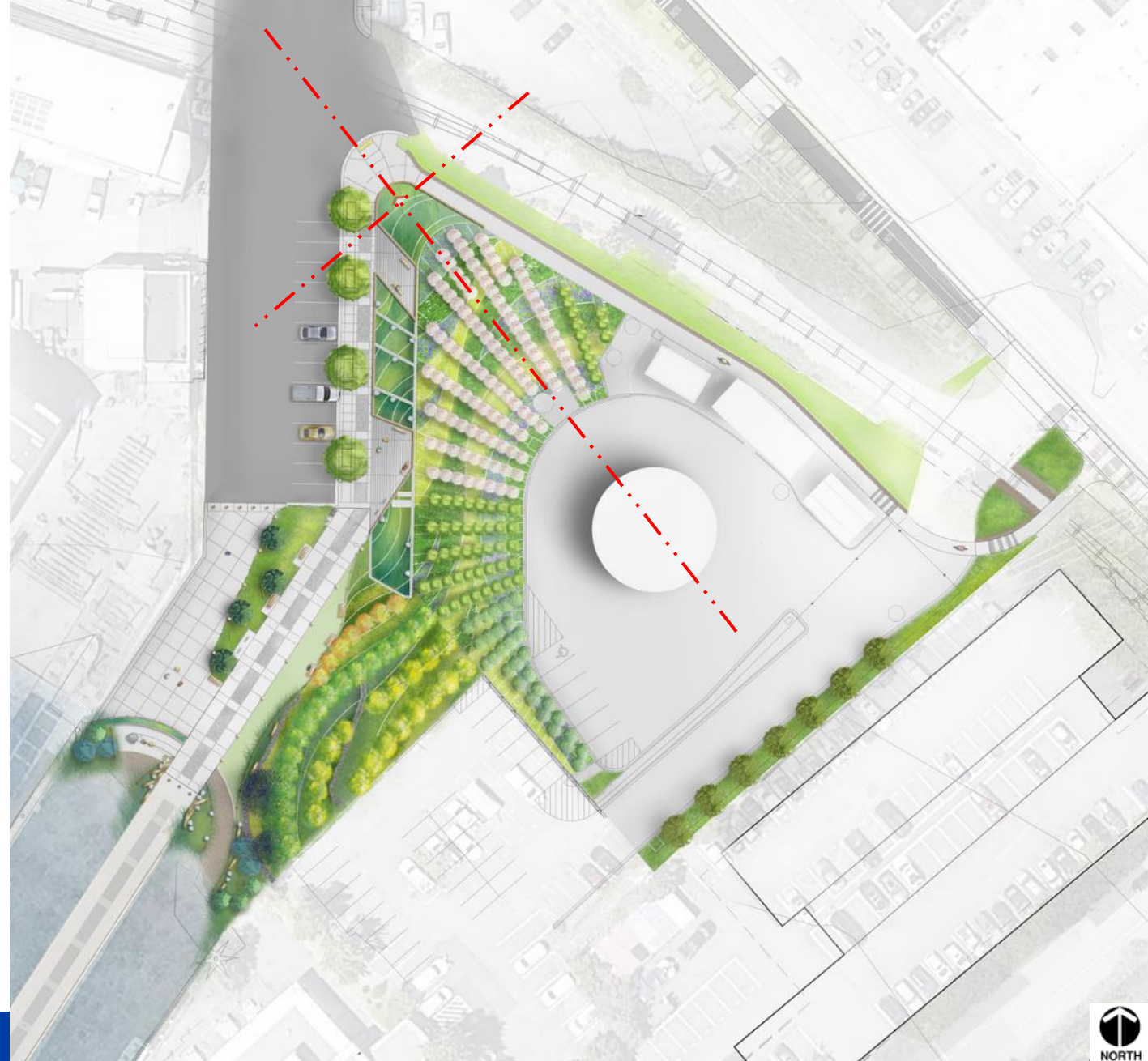


# PUBLIC ART

Front



VERE  
GGE<sup>20</sup>





# Site Furnishings & Details

Fence



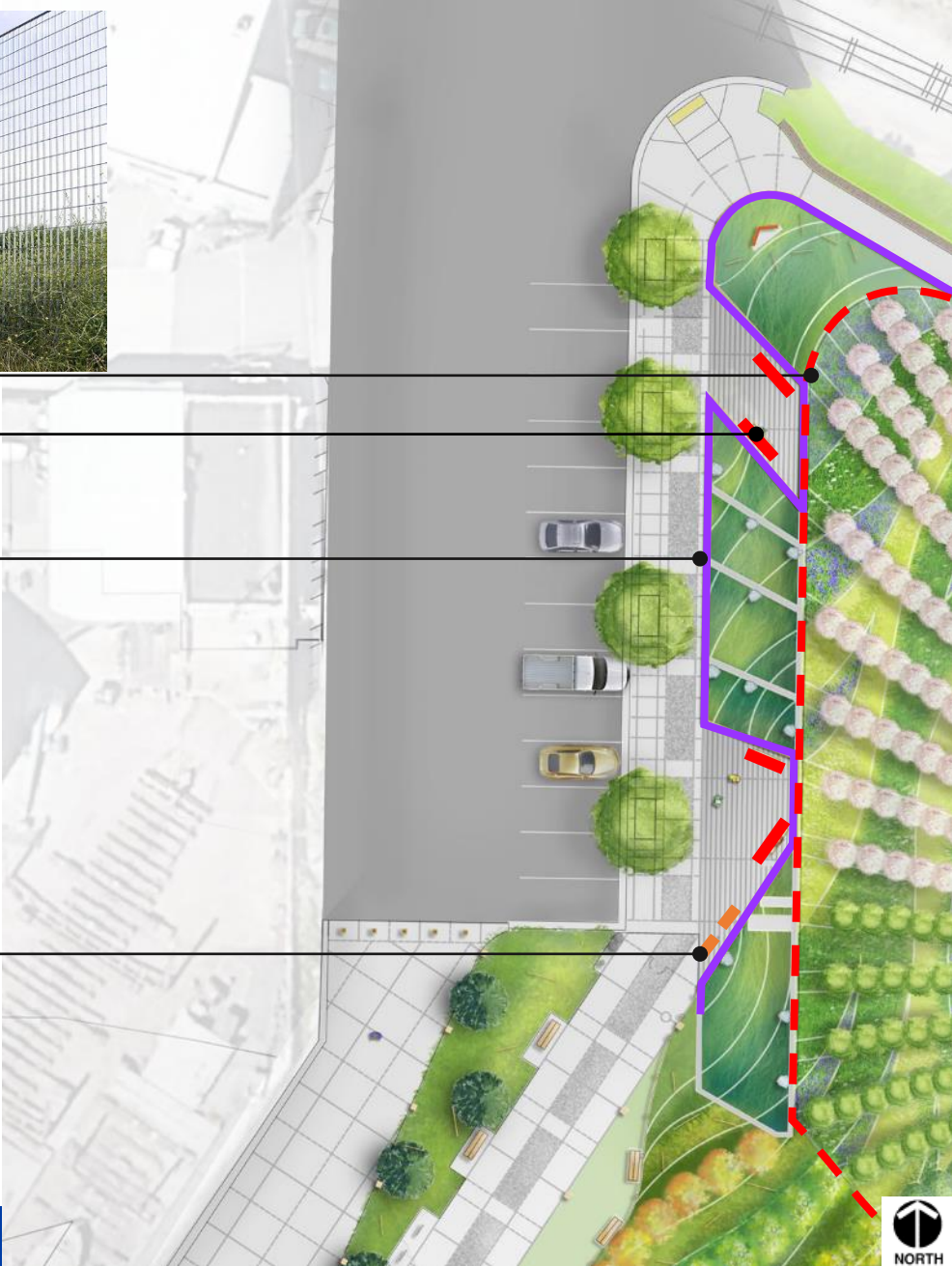
Large wood timber benches  
(flexible to sit in all directions)



Bull rails with low lighting



Bike racks





# Site Furnishings & Details

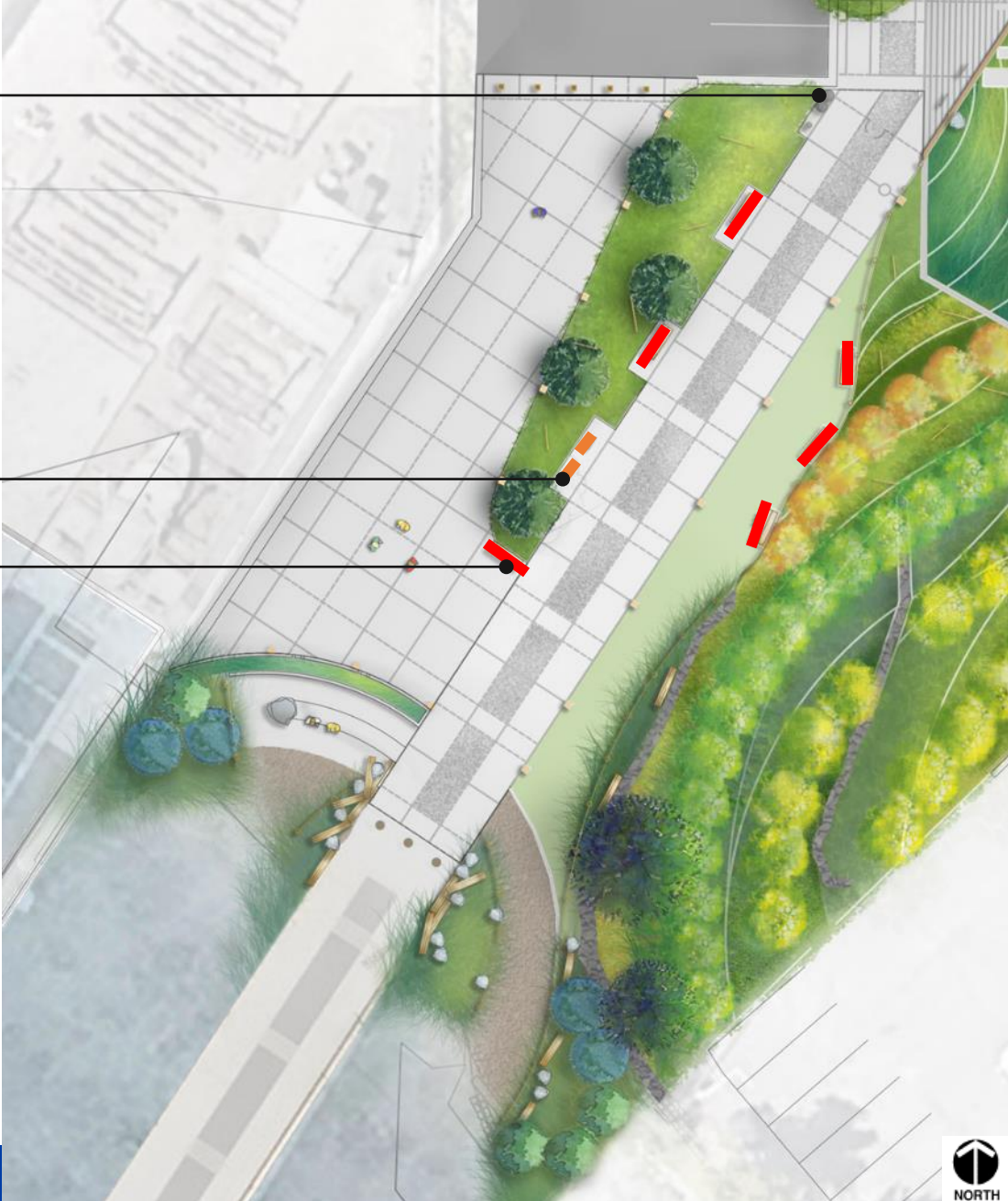
Trash, recycle, and dog waste receptacles



Bike racks



Large wood timber benches (with backs)





# Street End Updates

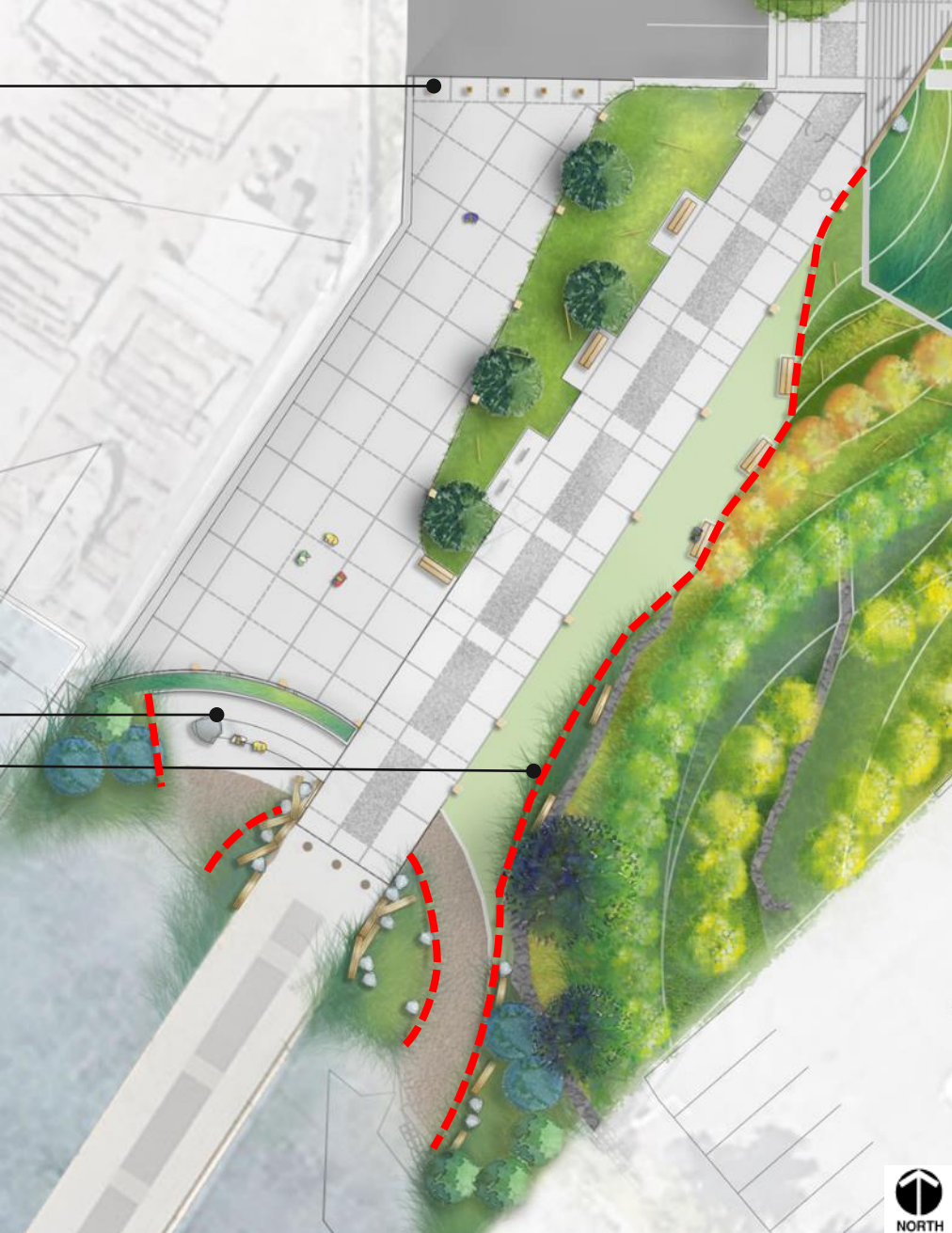


ADA accessible beach with seating

Removable wood bollards



Split rail wood fencing







**Pedestrian  
Fixture, 14' Pole**  
UrbanScape LED



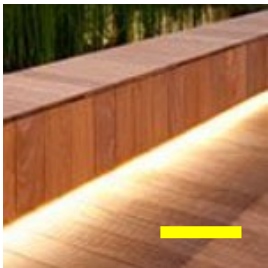
**Bollard**  
Hess Linea  
S 900



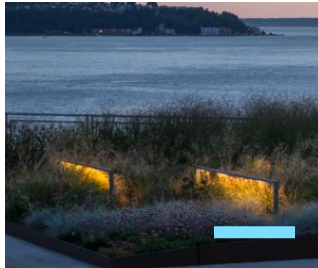
**Uplight**  
BK Lighting  
HP



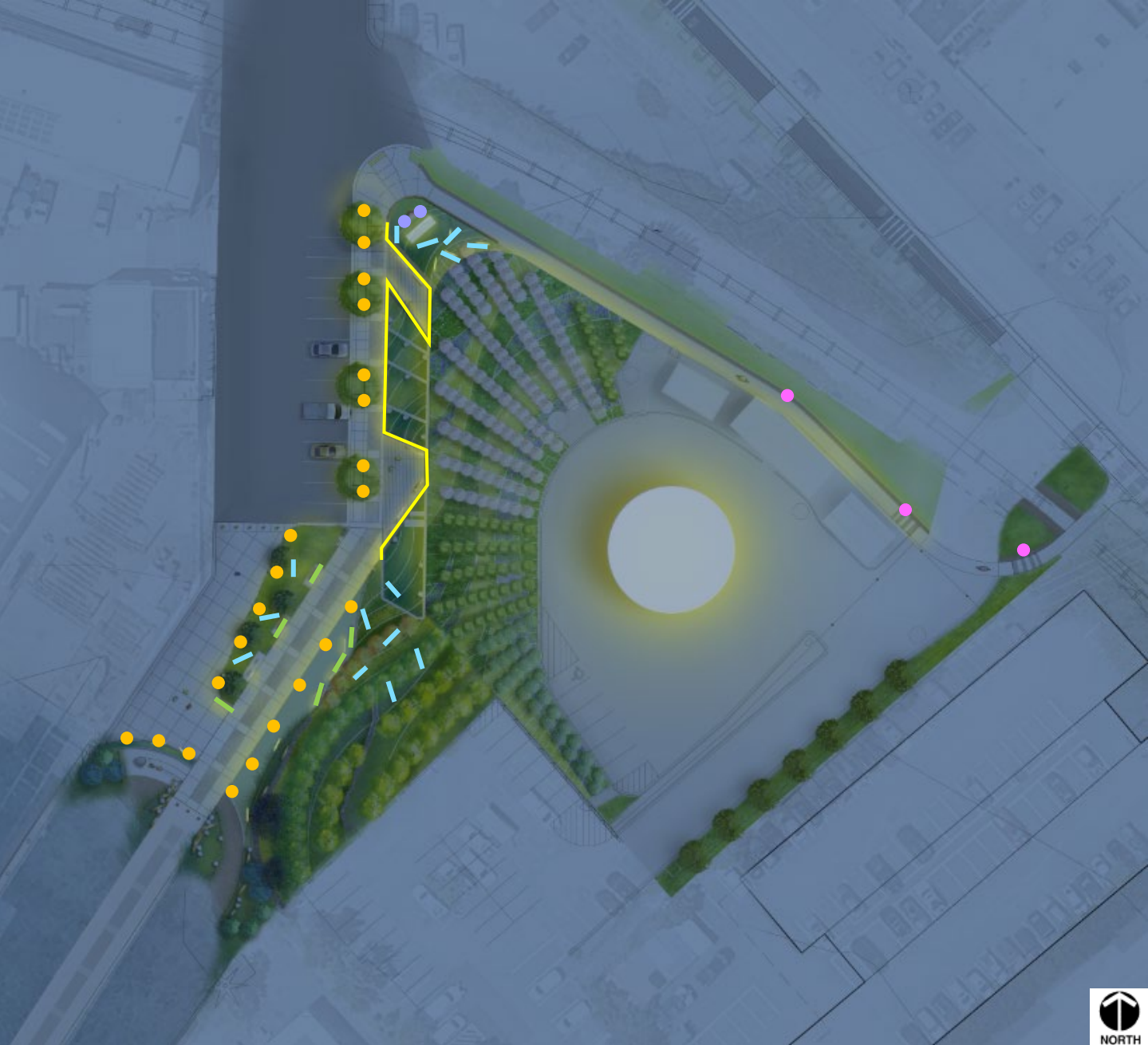
**Bench Light**  
Q-Tran



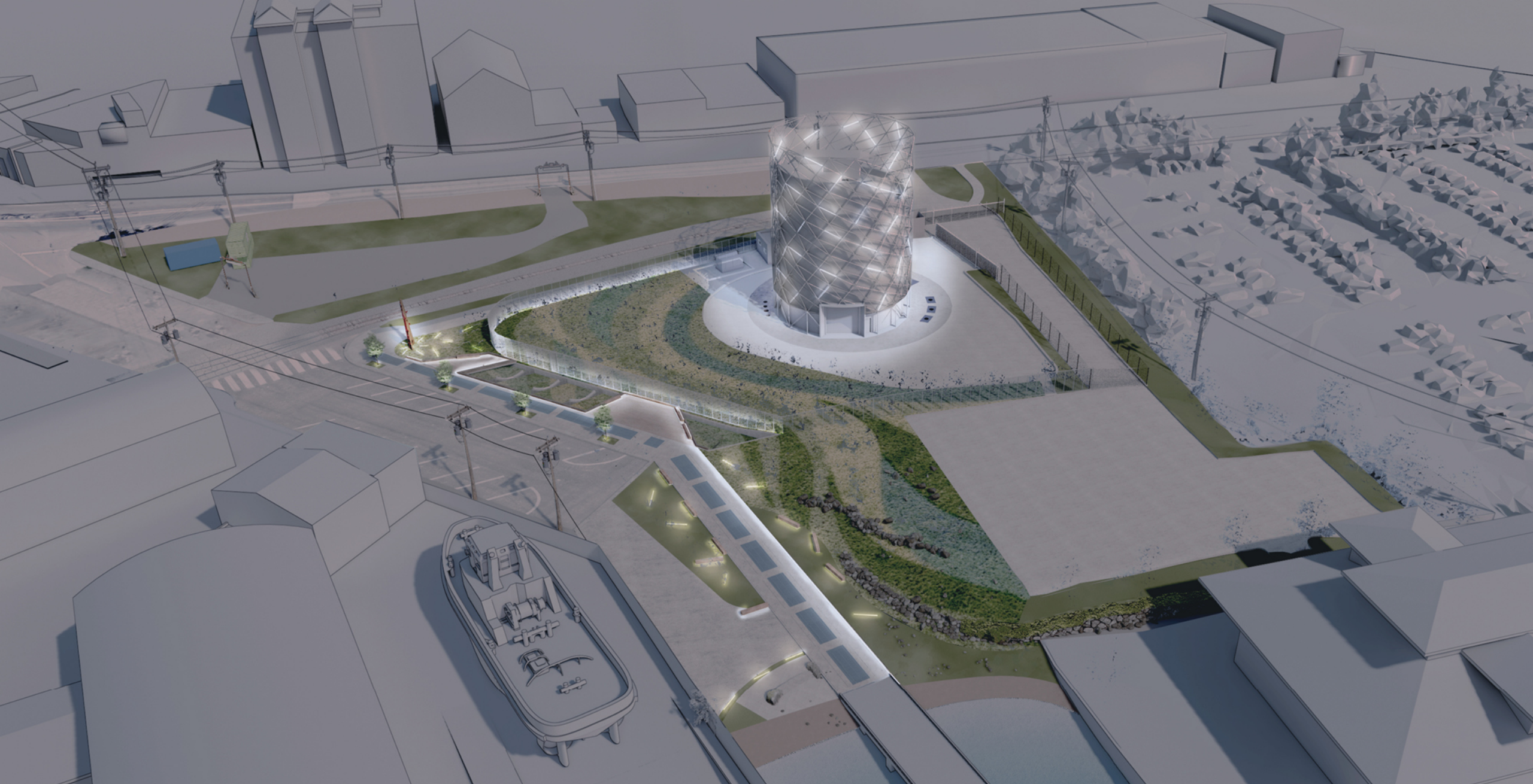
**Linear Light**  
Q-Tran



**"Firefly" Light**  
Q-Tran





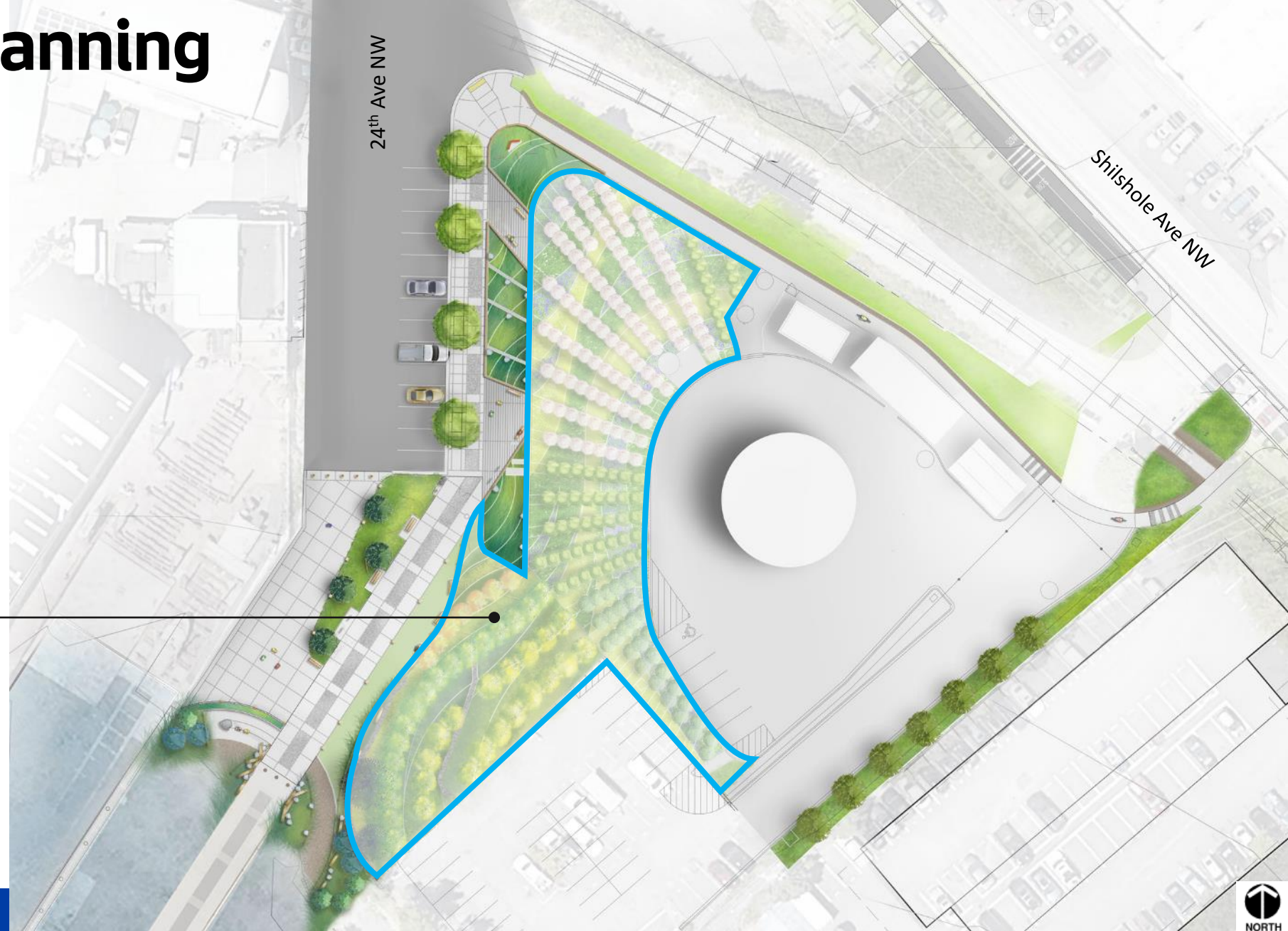




# Future Project Planning

1. Workforce Master Plan
  - Through 2023
2. Potential Site Planning

Interim landscaped area







# PUBLIC ART LIGHTING

















# Next Steps

## Storage Tunnel

- Construction through 2023

## Wallingford Conveyance

- Construction late 2022 through 2024

## TEPS & Ballard Conveyance

- Construction 2023 through 2025



# Questions?

- [Alan.lord@seattle.gov](mailto:Alan.lord@seattle.gov)
- **Want more information?**
- Sign up for updates: [spushipcanal.participate.online](https://spushipcanal.participate.online)

