

Investing in the Health of the Sound and the Future of Our Region

March 2024

Project Background

Seattle Public Utilities and King County Wastewater Treatment Division are building an underground storage tunnel to significantly reduce the amount of polluted stormwater and sewage that flows into the Lake Washington Ship Canal, Salmon Bay, and Lake Union from our sewer system during storms.

The tunnel is 2.7-miles long, running from Ballard to Wallingford, and approximately 18-ft, 10-in wide. It will temporarily hold more than 29 million gallons of sewage and stormwater during heavy rains. When the storm passes, the stored sewage and stormwater will be sent to King County's West Point Wastewater Treatment Plant.

Fremont Site Elements

In spring 2020, Seattle Public Utilities and King County began work in Fremont for the Ship Canal Water Quality Project. Work includes:

- Soil stabilization
- Building the new storage tunnel
- Building a drop shaft to carry sewage and stormwater into the new storage tunnel
- New pipe and structure installation to connect the new shaft to the existing combined sewer system overflow pipe
- A new 8-ft diameter tunnel under the Ship Canal to carry flows from Queen Anne to the storage tunnel
- New underground structures to house mechanical, electrical, and odor control equipment
- Utility relocations



What to Expect During Construction

- Construction-related noise, traffic, dust, and vibrations
- Full closure of NW 36th St between Leary Way NW and 3rd Ave NW
- Closure of 2nd Ave NW between Leary Way NW and NW Canal St
- Periodic temporary lane closures and detours around the project area
- Pedestrian sidewalk detour on north side of Leary Way NW
- Increased truck traffic
- Parking restrictions near work zone
- Removal of some trees in the project area
- Burke-Gilman Trail to remain open except temporary impact during conduit installation (likely one week)

Contact

For questions or comments about this project:

Email: SPU_ShipCanalProject@seattle.gov

Call: 206-701-0233

Website: spushipcanal.participate.online

For interpretation services please call 206-701-0233

如需要口譯服務 請撥電話號碼 206-701-0233

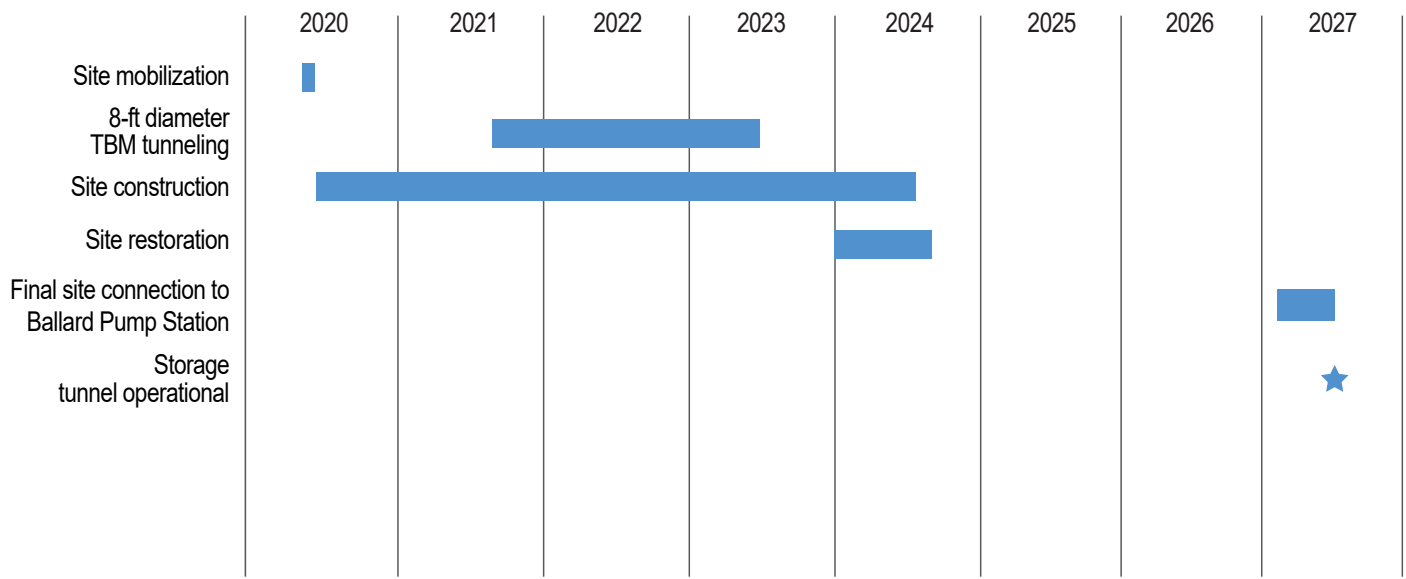
통역 서비스를 원하시면 206-701-0233 으로

Wixii turjubaan afka ah ku saabsan ,fadlan la soo xariir taleefoonka 206-701-0233

Para servicios de interpretación por favor llame al 206-701-0233

Para sa serbisyo ng tagapagpaliwanag tumawag sa 206-701-0233

Fremont schedule



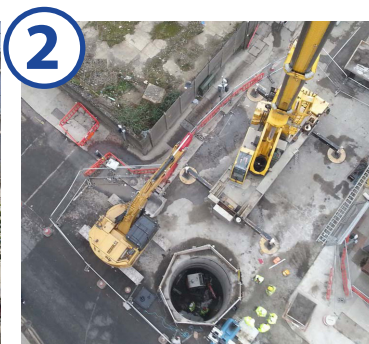
The following photos are examples from other construction sites

Updated March 2024



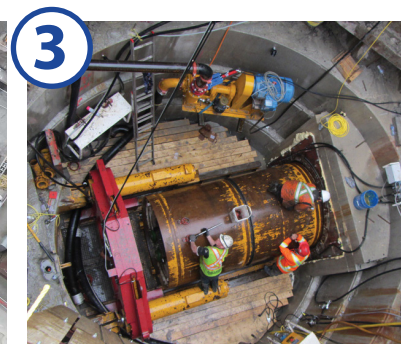
Soil Stabilization

After the site was set up in spring 2020, we began preparing the soil for underground construction and tunneling using stabilization techniques (jet grouting).



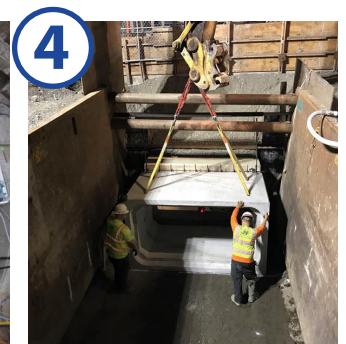
Excavation & Shaft Construction

Crews dug beneath the surface to prepare and build underground structures that will be used to access the storage tunnel for operations and maintenance.



8-ft diameter Tunneling Machine Launch

An 8-ft tunnel will bring flows from Queen Anne to the storage tunnel via Fremont. To build this tunnel, our tunnel boring machine launched under the Ship Canal starting in Fremont in summer 2021 and arrived in Queen Anne in 2023.



Diversion Structure Construction

Crews are excavating and building an underground diversion structure which will send untreated sewage and stormwater to the storage tunnel during heavy rains.



Vault Construction

Crews are building an underground vault that will house mechanical, electrical, and odor control equipment.



Site Restoration

Once construction is complete, all impacted areas will be restored to previous conditions. This will include landscape restoration and repaving streets and sidewalks.