

## Investing in Puget Sound's Health and the Region's Future

October 2021

### Project Background

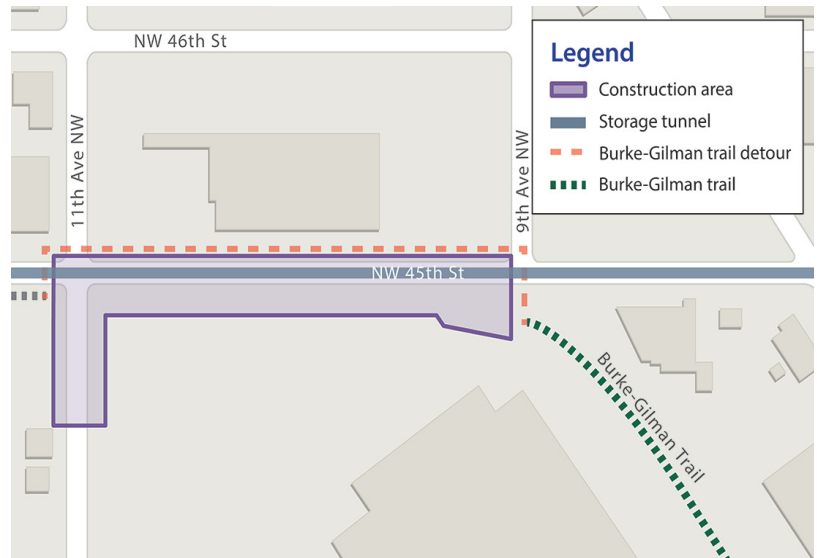
Seattle Public Utilities and King County Wastewater Treatment Division are building an underground storage tunnel to significantly reduce the amount of polluted stormwater and sewage that flows into the Lake Washington Ship Canal, Salmon Bay, and Lake Union from our sewer system during storms.

The tunnel is 2.7-miles long, running from Ballard to Wallingford, and approximately 18-ft, 10-in wide. It will temporarily hold more than 29 million gallons of sewage and stormwater during heavy rain. When the storm passes, the stored sewage and stormwater will be sent to King County's West Point Wastewater Treatment Plant.

### East Ballard Site Elements

In spring 2020, Seattle Public Utilities and King County began work in East Ballard for the Ship Canal Water Quality Project. Work includes:

- Soil stabilization
- Building the new storage tunnel
- Building a drop shaft near the intersection of 11th Ave NW and NW 45th St to collect flows and send them to the tunnel
- Installing new pipes and structures to convey polluted stormwater and sewage to the tunnel
- New underground structures to house mechanical and electrical equipment, and odor control



### What to Expect During Construction

- Construction-related noise, traffic, dust, and vibrations
- The Burke-Gilman Trail will be detoured to the north side of NW 45th St
- Periodic traffic impacts to 11th Ave NW and NW 45th St, including one-lane and full-road closures, now through 2022
- Removal of some trees in the project area
- Possible nighttime work
- Increased truck traffic
- Parking restrictions

### Contact

For questions or comments about this project:

**Email:** [SPU\\_ShipCanalProject@seattle.gov](mailto:SPU_ShipCanalProject@seattle.gov)

**Call:** 206-701-0233

**Website:** [spushipcanal.participate.online](https://spushipcanal.participate.online)

For interpretation services please call **206-386-9778**

如需要口譯服務 請撥電話號碼 **206-386-9778**

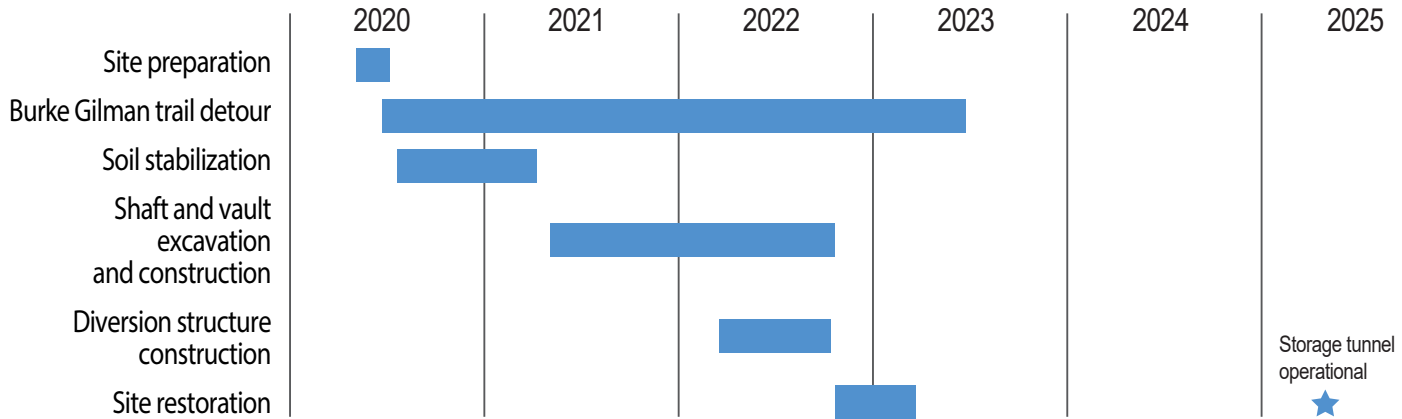
통역 서비스를 원하시면 **206-386-9778** 으로

Wixii turjubaan afka ah ku saabsan ,fadlan la soo xariir taleefoonka **206-386-9778**

Para servicios de interpretación por favor llame al **206-386-9778**

Para sa serbisyo ng tagapagpaliwanag tumawag sa **206-386-9778**

## East Ballard Schedule



■ Construction

Schedule is subject to change

Some of the following photos are examples from other construction sites



### 1 Site Preparation

In spring 2020, crews mobilized to the work area and set up fences for the safety of crews and people nearby.



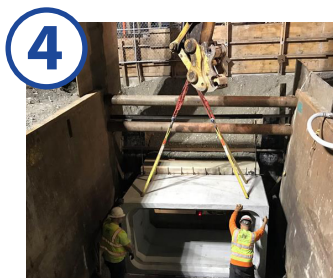
### 2 Soil Stabilization

After site set up, we began preparing the soil for underground construction using stabilization techniques (jet grouting, ground freezing, etc.).



### 3 Excavation & Construction

Crews dug beneath the surface to prepare and build underground structures that will be used to access the storage tunnel for operations and maintenance.



### 4 Diversion Structure Construction

Crews will excavate and build an underground diversion structure which will send untreated sewage and stormwater to the storage tunnel during heavy rains.



### 5 Site Restoration

Once construction is complete, all impacted areas will be restored to previous conditions. This will include landscape restoration and repaving streets and sidewalks.