

Investing in the Health of the Sound and the Future of Our Region

August 2022

Project Background

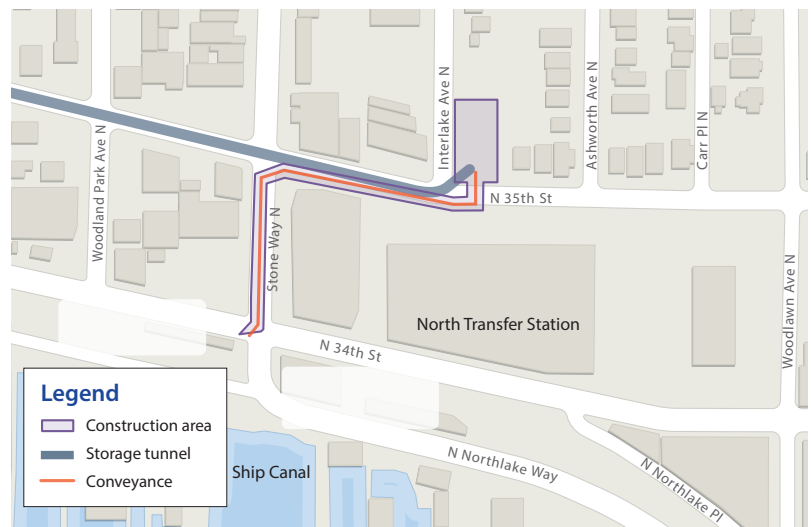
Seattle Public Utilities and King County Wastewater Treatment Division are building an underground storage tunnel to significantly reduce the amount of polluted stormwater and sewage that flows into the Lake Washington Ship Canal, Salmon Bay, and Lake Union from our sewer system during storms.

The tunnel is 2.7-miles long, running from Ballard to Wallingford, and approximately 18-ft, 10-in wide. It will temporarily hold more than 29 million gallons of sewage and stormwater during heavy rain. When the storm passes, the stored sewage and stormwater will be sent to King County's West Point Wastewater Treatment Plant.

Wallingford Site Elements

In August 2020, Seattle Public Utilities and King County began work in Wallingford for the Ship Canal Water Quality Project. Work includes:

- Building the new storage tunnel
- Constructing a small building to house odor control equipment
- Building a drop shaft to carry sewage and stormwater into the new storage tunnel
- Installing pipes along Stone Way N and N 35th St to connect the existing combined sewer system to the tunnel
- New underground structures to house mechanical and electrical equipment
- Restoration of impacted roadways



What to Expect During Construction

- Construction-related noise, traffic, dust, and vibrations
- Sidewalk closure on the east side of Interlake Ave N
- Back-to-back closures for Stone Way N and N 35th St
- Parking restrictions and roadway detours
- Northbound lane impacts on Interlake Ave N with flaggers present to direct traffic
- Removal of some trees in the project area

Contact

For questions or comments about this project:

Email: SPU_ShipCanalProject@seattle.gov

Call: 206-701-0233

Website: spushipcanal.participate.online

For interpretation services please call **206-386-9778**

如需要口譯服務 請撥電話號碼 **206-386-9778**

통역 서비스를 원하시면 **206-386-9778** 으로

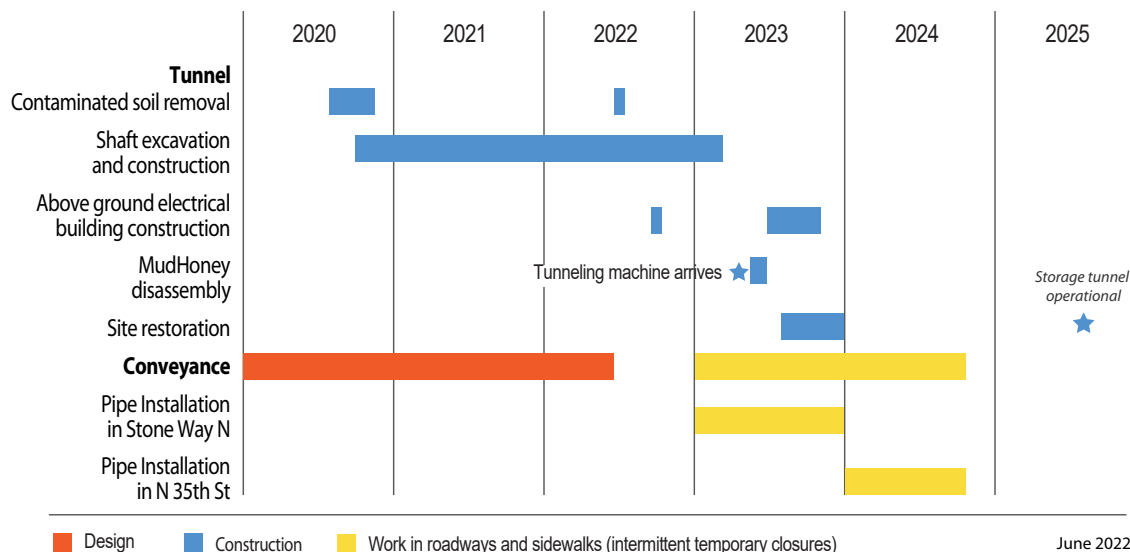
Wixii turjubaan afka ah ku saabsan ,fadlan la soo xariir taleefoonka **206-386-9778**

Para servicios de interpretación por favor llame al **206-386-9778**

Para sa serbisyo ng tagapagpaliwanag tumawag sa **206-386-9778**

Wallingford Schedule

Schedule is subject to change



The following photos are examples from other construction sites.

1



Contaminated Soil Removal

In August 2020, crews removed contaminated soil and prepared the work area.

2



Excavation & Construction

Crews are working beneath the surface to prepare and build underground structures that will be used to access the storage tunnel for operations and maintenance.

3



Above ground construction

Crews will build an odor control room to manage odors created by the storage tunnel.

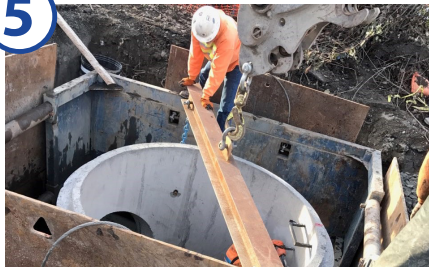
4



Tunneling Machine Arrival & Disassembly

Wallingford marks the eastern end of the tunnel, where the tunneling machine will complete its journey. Once it arrives, crews will disassemble and remove it from the site.

5



Conveyance

Crews will build new pipes along Stone Way N and N 35th St to connect the existing sewer and stormwater pipes to the storage tunnel. This work will entail lane closures and parking restrictions on N 35th St and Stone Way N.

6



Site Restoration

Once construction is complete, all impacted areas will be restored to previous conditions. This will include the landscape restoration, repaving streets and sidewalks.